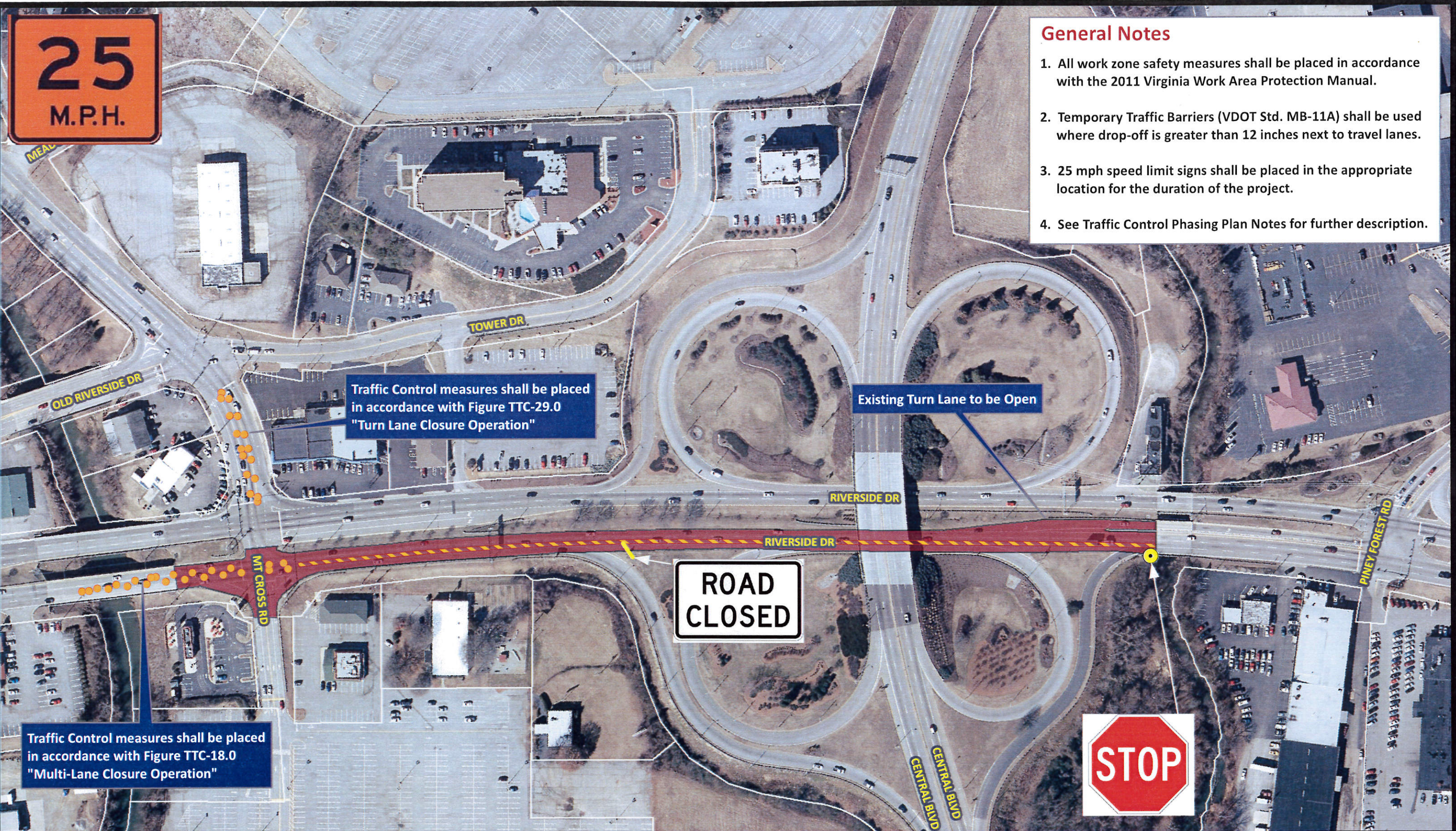


- General Notes**
- 1. All work zone safety measures shall be placed in accordance with the 2011 Virginia Work Area Protection Manual.
 - 2. Temporary Traffic Barriers (VDOT Std. MB-11A) shall be used where drop-off is greater than 12 inches next to travel lanes.
 - 3. 25 mph speed limit signs shall be placed in the appropriate location for the duration of the project.
 - 4. See Traffic Control Phasing Plan Notes for further description.



- General Notes**
1. All work zone safety measures shall be placed in accordance with the 2011 Virginia Work Area Protection Manual.
 2. Temporary Traffic Barriers (VDOT Std. MB-11A) shall be used where drop-off is greater than 12 inches next to travel lanes.
 3. 25 mph speed limit signs shall be placed in the appropriate location for the duration of the project.
 4. See Traffic Control Phasing Plan Notes for further description.



Traffic Control measures shall be placed in accordance with Figure TTC-29.0 "Turn Lane Closure Operation"

Existing Turn Lane to be Open

ROAD
CLOSED



Traffic Control measures shall be placed in accordance with Figure TTC-18.0 "Multi-Lane Closure Operation"



Riverside Drive Concrete Removal
Traffic Control Phase III Plan

