
Appendix

The following maps, charts, and tables provide additional details for the DFD Standards of Cover and are referenced throughout the document.

Figure 1: Map of Station and Fire District First-Due Service Areas	3
Figure 2: Danville Fire Department Organization Chart	4
Figure 3: Map of Active Railroad Lines Over Population Density	5
Figure 4: Norfolk Southern Railway Hazardous Material Shipments thru Danville.....	6
Figure 5: Map of Prohibited Railroad Crossings, 5 Minute Drive-Time, and Pine Tag Community	7
Figure 6: Mountain Bike and Mixed Use Trail Systems	8
Figure 7: Map of Flood Risk Over Population Density	9
Figure 8: USGS Earthquake Hazards Program Virginia Seismic Hazard Map.....	10
Figure 9: Map of Unoccupied Housing Units with Fire District Overlay	11
Figure 10: Map of 5 Minute Drive-Time Analysis of Address Points	12
Figure 11: Map of Overlap Coverage in the First-Due 5 Minute Drive-Time Area.....	13

Figure 12: Map of 11-Minute Drive-Time Analysis for Ladder (ERF) from Base at Station 1	14
Figure 13: Density Map of All Calls for Service 2009-2013 with Fire District Overlay	15
Figure 14: Density Map of EMS Calls 2009-2013 with Fire District Overlay.....	16
Figure 15: Density Map of Structure Fires 2009-2013 with Fire District Overlay	17
Figure 16: Map of Average Family Income with Fire District Overlay	18
Figure 17: Map of Average Family Income with Unoccupied Housing Units and Fire District Overlays	19
Figure 18: Map of Average Family Income with Density of All Service Calls and Fire District Overlays.....	20
Table 1: Effective Response Force Definitions for Danville’s Fire Priority Dispatch System (FPDS) Protocol	21

Figure 1: Map of Station and Fire District First-Due Service Areas

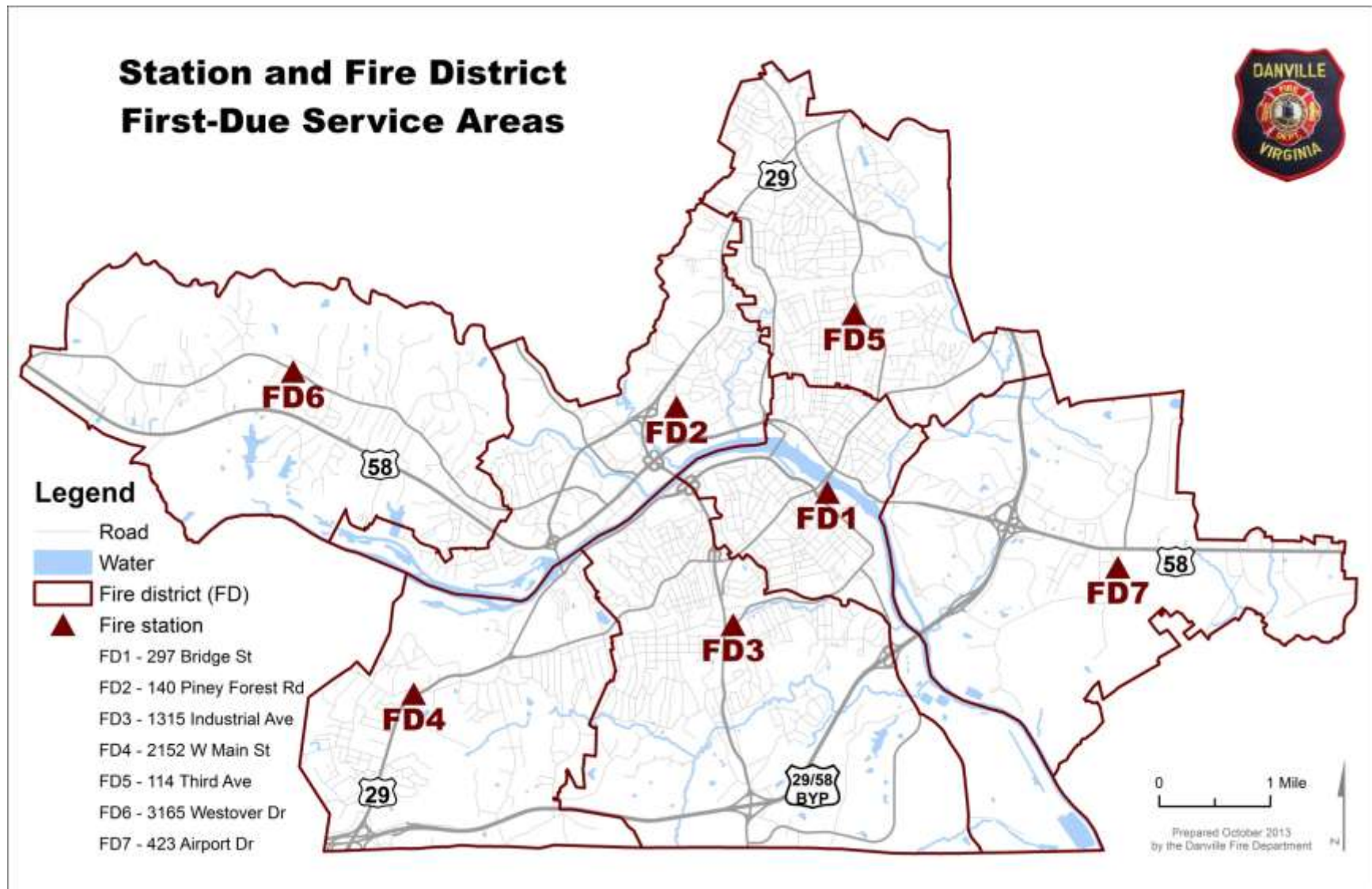


Figure 2: Danville Fire Department Organization Chart

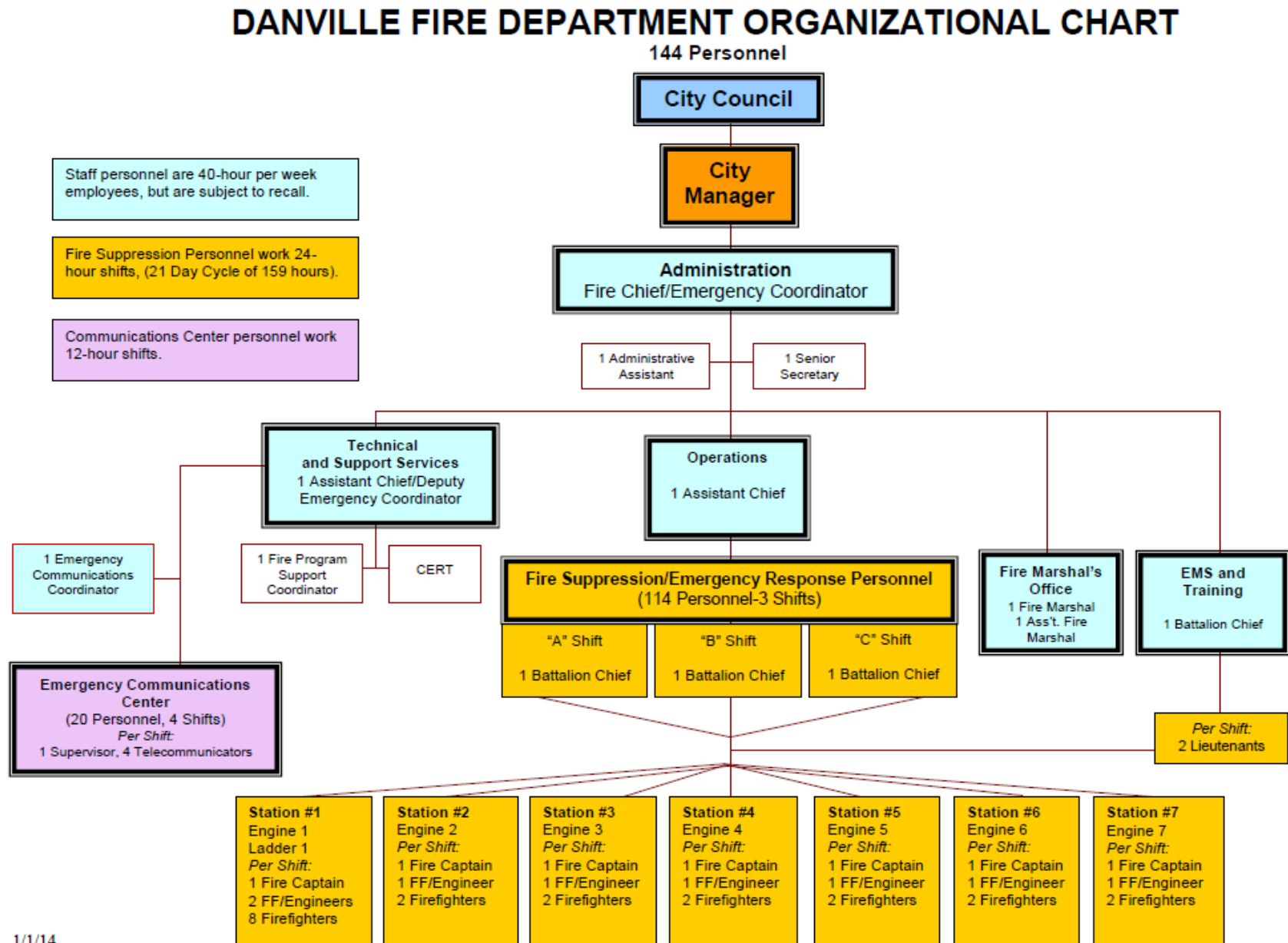


Figure 3: Map of Active Railroad Lines Over Population Density

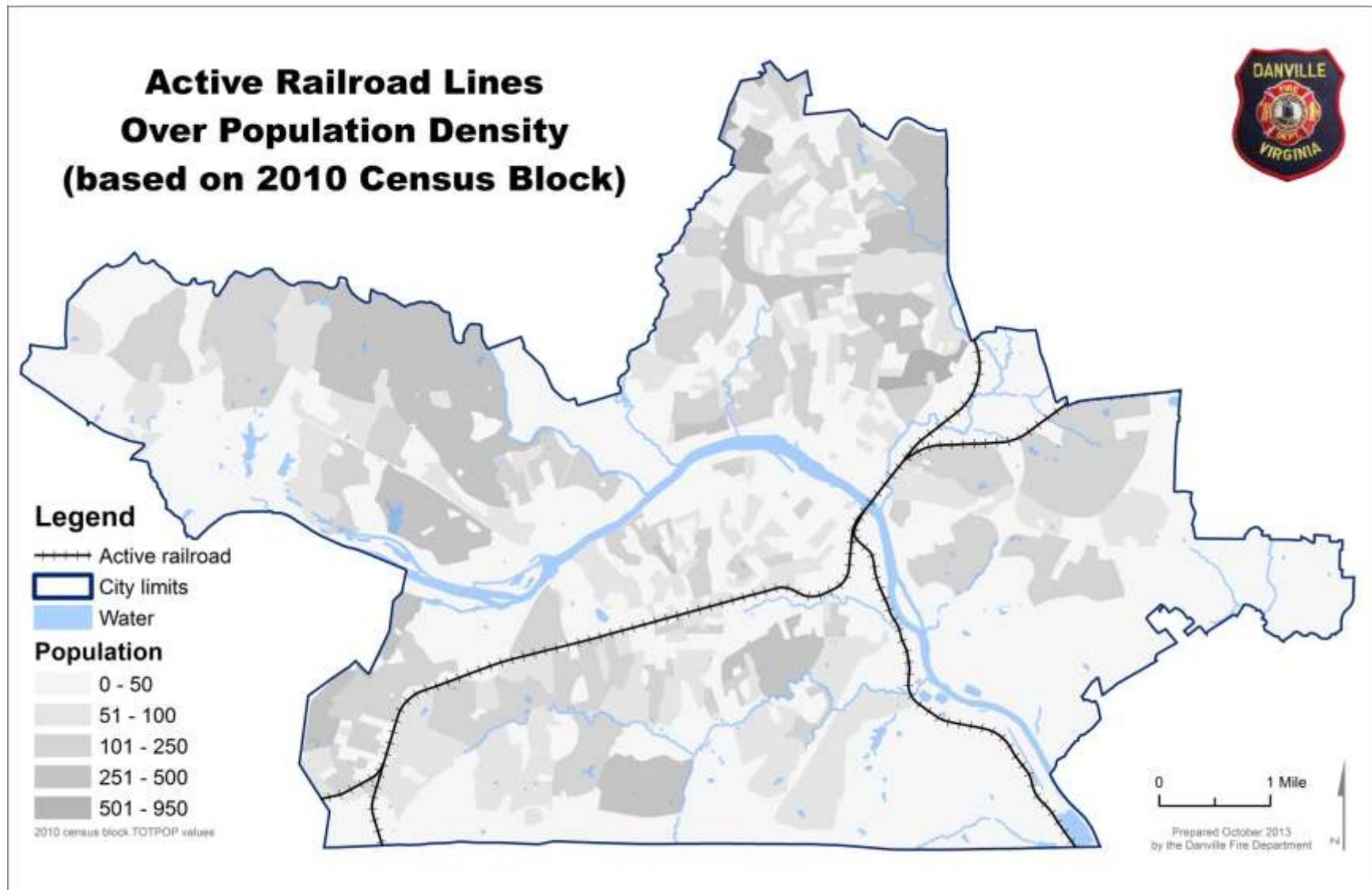


Figure 4: Norfolk Southern Railway Hazardous Material Shipments thru Danville

HAZARDOUS MATERIALS SUMMARY - LOCATION 235 DANVILLE VA
TOP 25 COMMODITIES LOADED SHIPMENTS LATEST 12 MONTHS ENDING AUGUST31 13

HMRC	PROPER SHIPPING NAME	CLASS	PKG GROUP	UN/NA
4950150	FAK-HAZARDOUS MATERIALS	FAK		
4909152	ALCOHOLS, N.O.S.	3	II, III	UN1987
4950130	FAK-HAZARDOUS MATERIALS	FAK		
4961605	ELEVATED TEMPERATURE	9	III	UN3257
4945770	SULFUR, MOLTEN	9	III	NA2448
4935240	SODIUM HYDROXIDE SOLUTION	8	II, III	UN1824
4918311	AMMONIUM NITRATE	5.1	III	UN1942
4930040	SULFURIC ACID	8	II	UN1830
4917403	SULFUR, MOLTEN	4.1	III	UN2448
4930228	HYDROCHLORIC ACID	8	II, III	UN1789
4905792	VINYL CHLORIDE,	2.1		UN1086
4918723	SODIUM CHLORATE	5.1	II	UN1495
4960196	ENVIRONMENTALLY HAZARDOUS	9	III	UN3082
4905752	PETROLEUM GASES,	2.1		UN1075
4904210	AMMONIA, ANHYDROUS	2.2		UN1005
4875648	HAZARDOUS WASTE,	9	III	NA3077
4932342	FERRIC CHLORIDE, SOLUTION	8	III	UN2582
4961609	ELEVATED TEMPERATURE	9	III	UN3257
4932376	BISULFITES, AQUEOUS	8	III	UN2693
4909230	METHANOL	3	II	UN1230
4907265	STYRENE MONOMER,	3	III	UN2055
4904509	CARBON DIOXIDE,	2.2		UN2187
4930247	PHOSPHORIC ACID SOLUTION	8	III	UN1805
4905424	BUTANE	2.1		UN1075
4930066	SULFURIC ACID, FUMING	8	I	UN1831

Figure 5: Map of Prohibited Railroad Crossings, 5 Minute Drive-Time, and Pine Tag Community

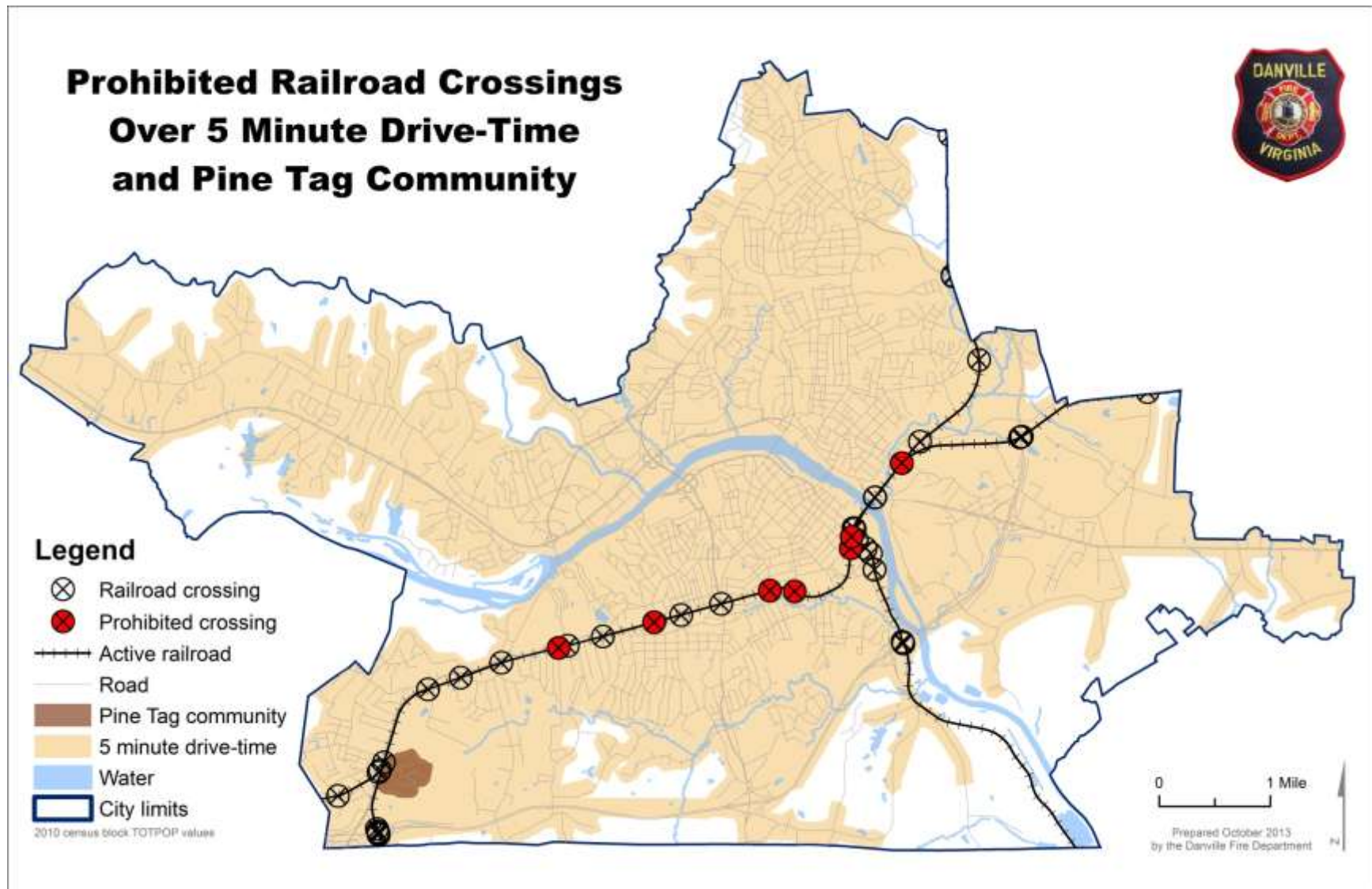


Figure 6: Mountain Bike and Mixed Use Trail Systems

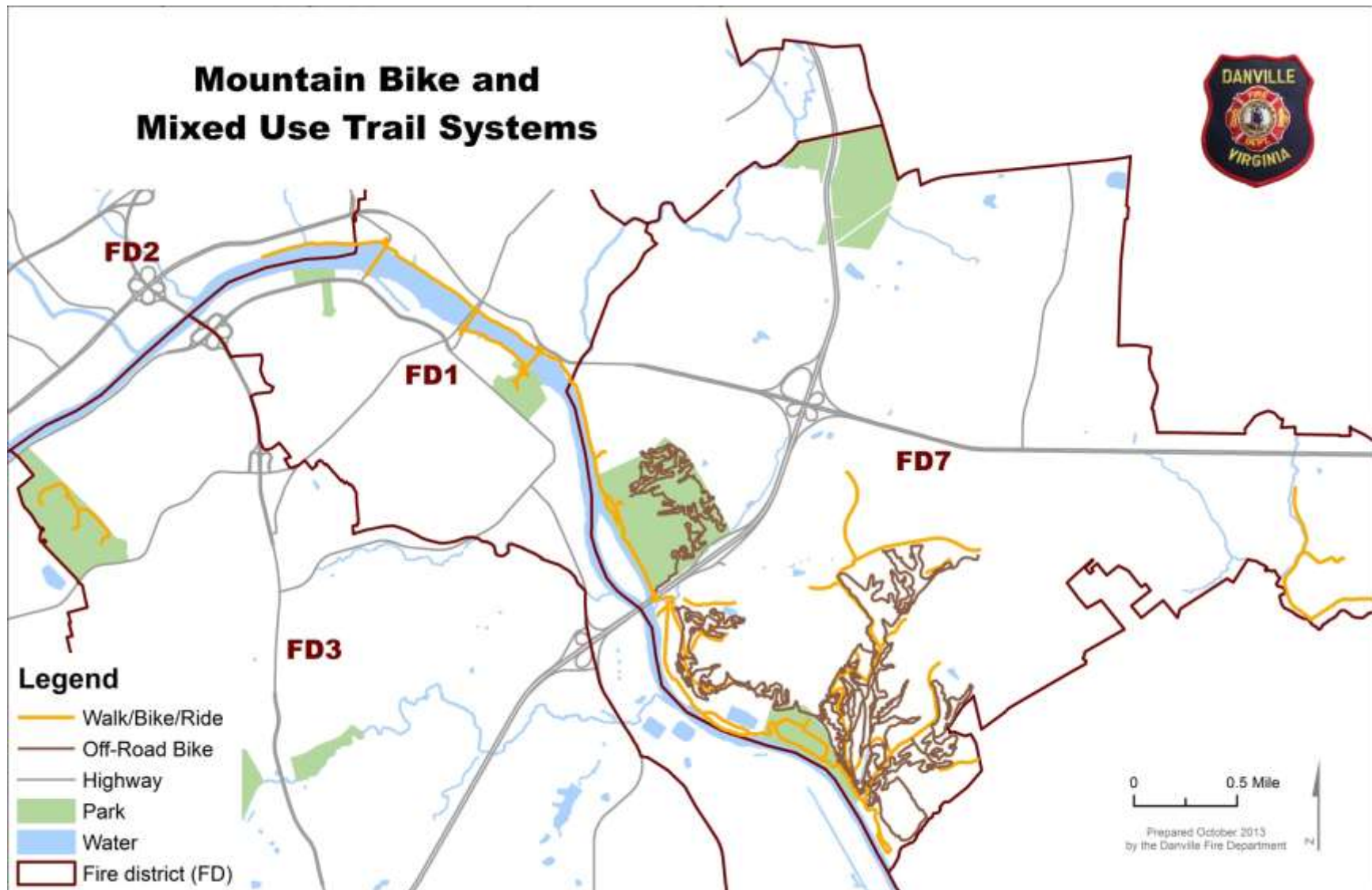


Figure 7: Map of Flood Risk Over Population Density

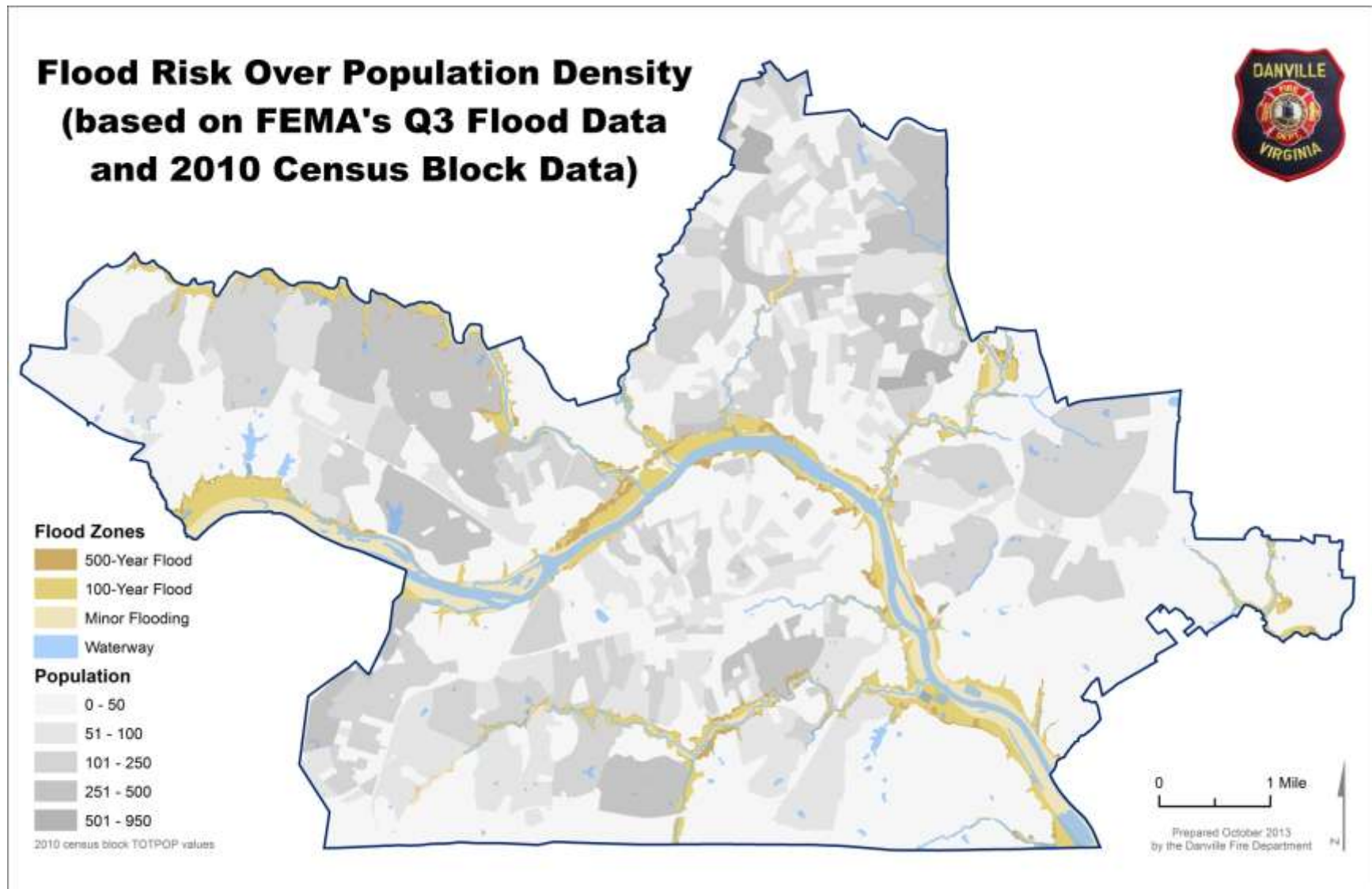
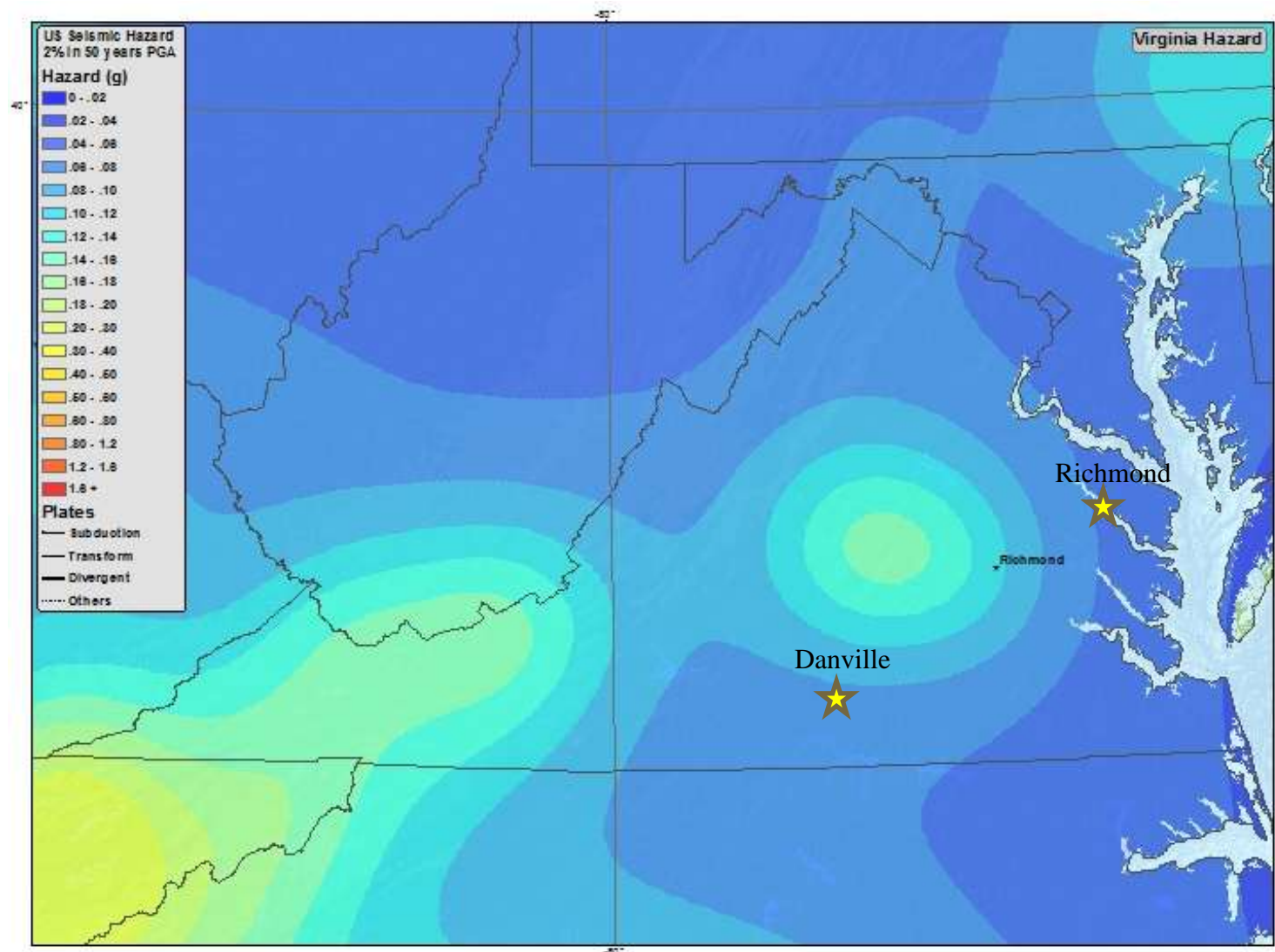


Figure 8: USGS Earthquake Hazards Program Virginia Seismic Hazard Map



<http://earthquake.usgs.gov/earthquakes/states/virginia/hazards.php>

Figure 9: Map of Unoccupied Housing Units with Fire District Overlay

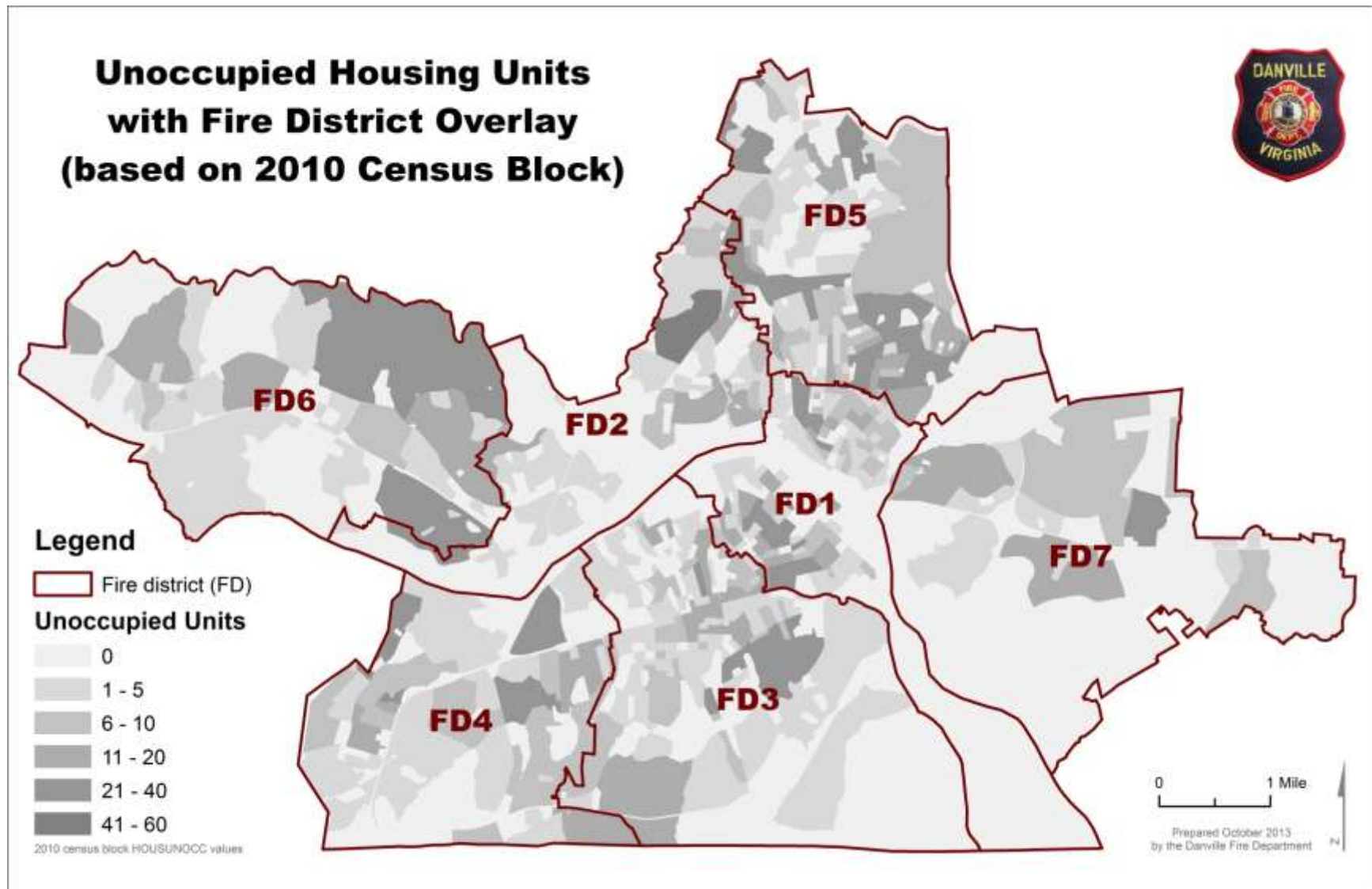


Figure 10: Map of 5 Minute Drive-Time Analysis of Address Points

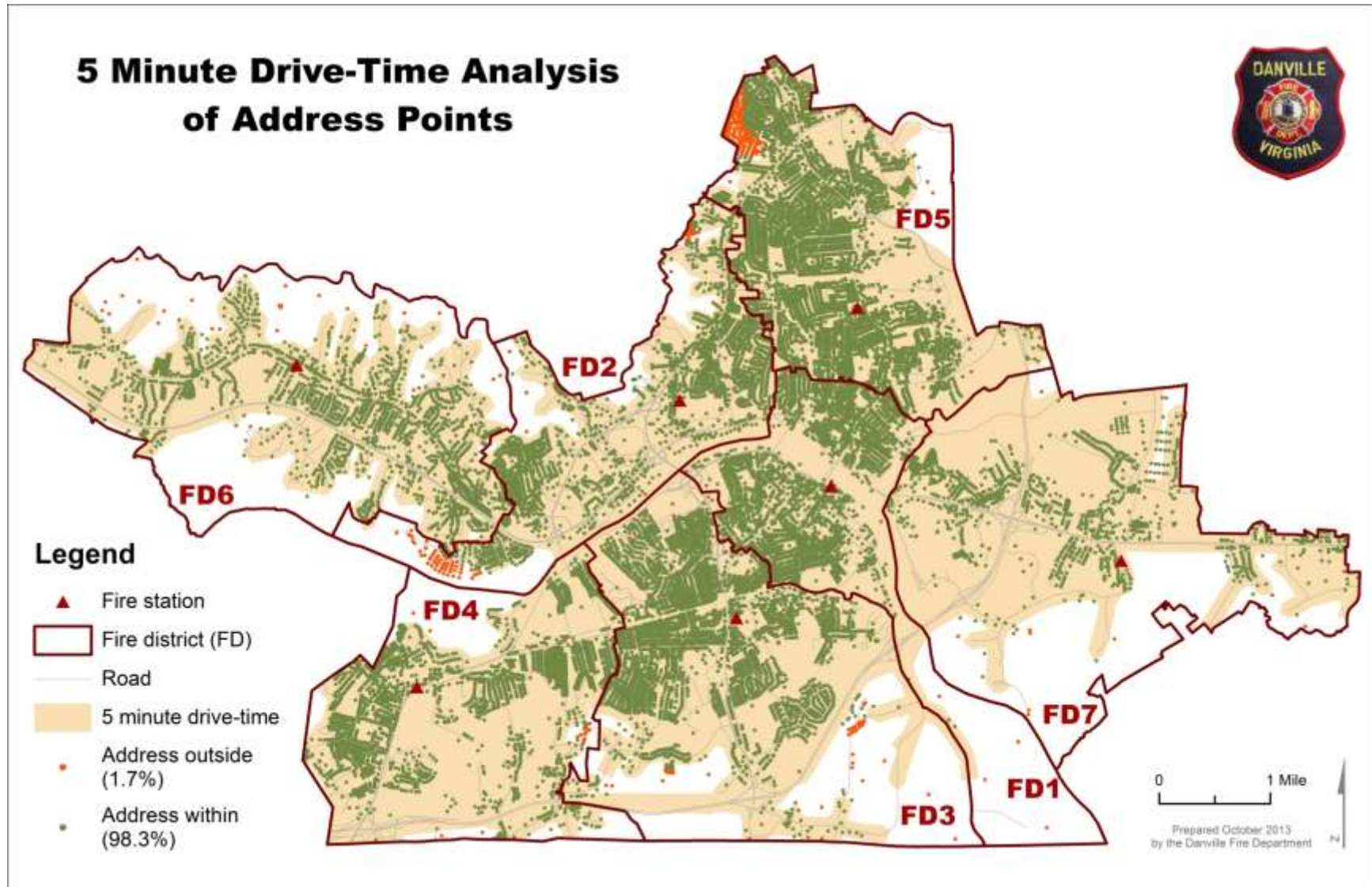


Figure 11: Map of Overlap Coverage in the First-Due 5 Minute Drive-Time Area

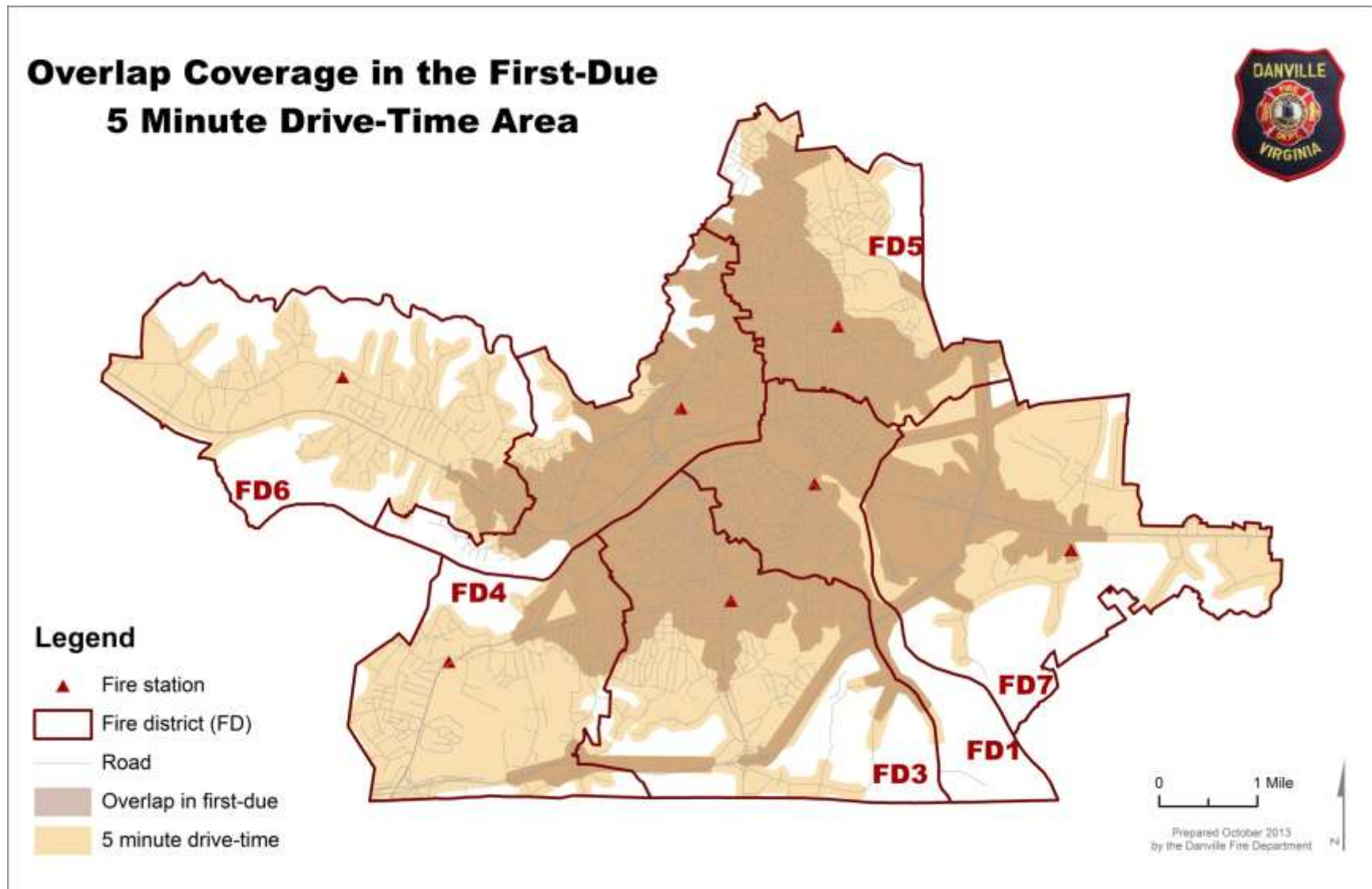


Figure 12: Map of 11-Minute Drive-Time Analysis for Ladder (ERF) from Base at Station 1

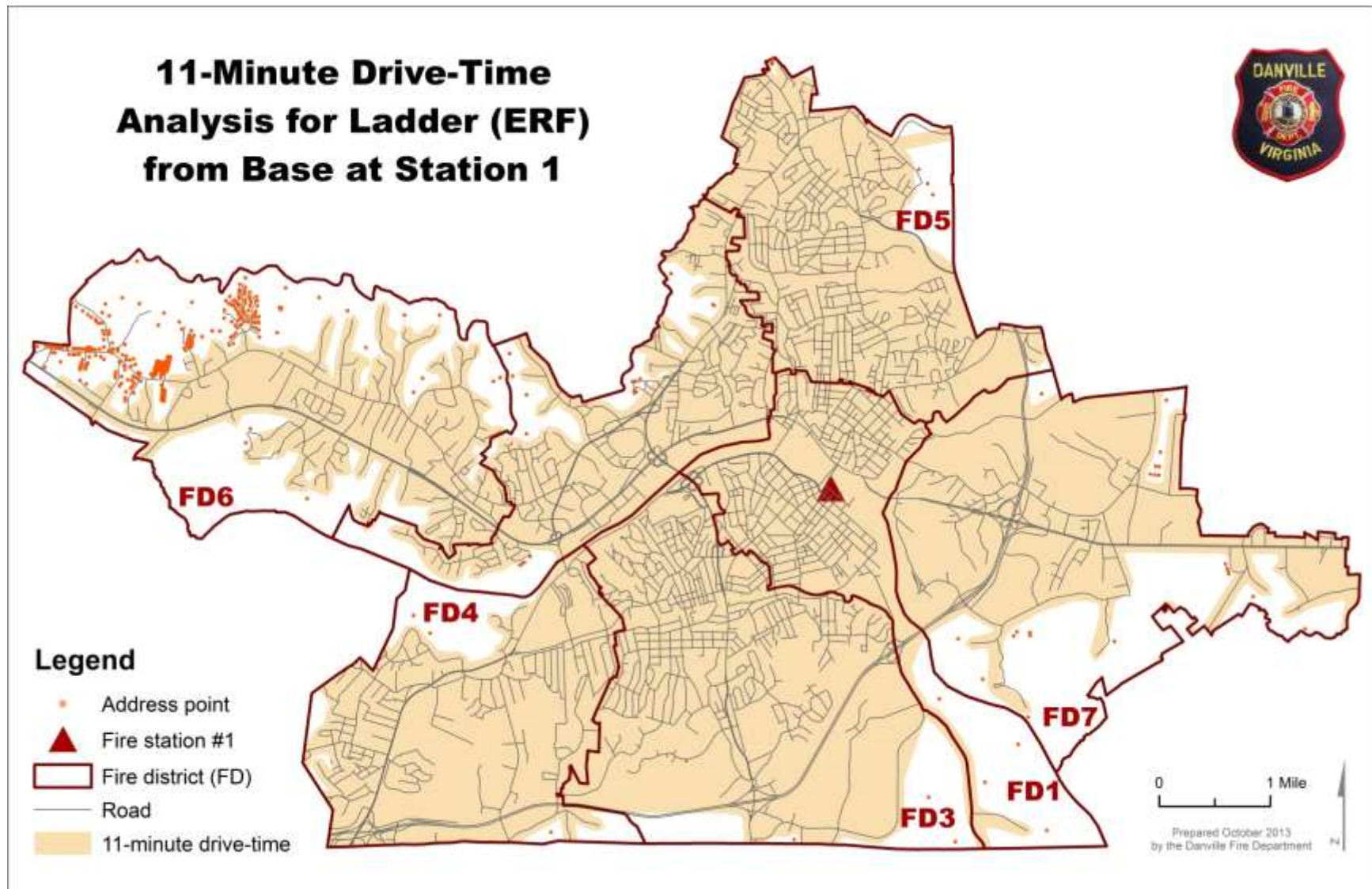


Figure 13: Density Map of All Calls for Service 2009-2013 with Fire District Overlay

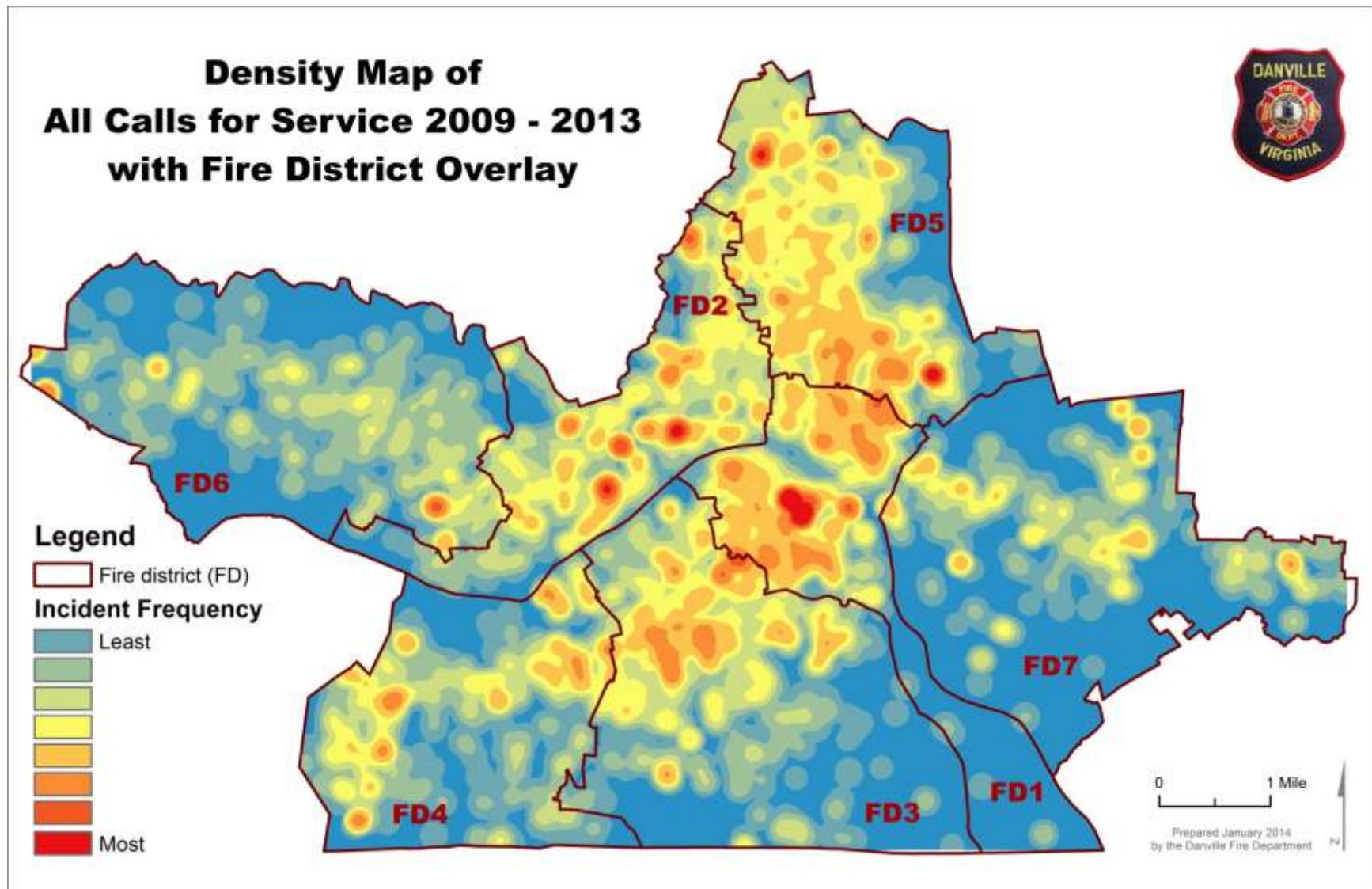


Figure 14: Density Map of EMS Calls 2009-2013 with Fire District Overlay

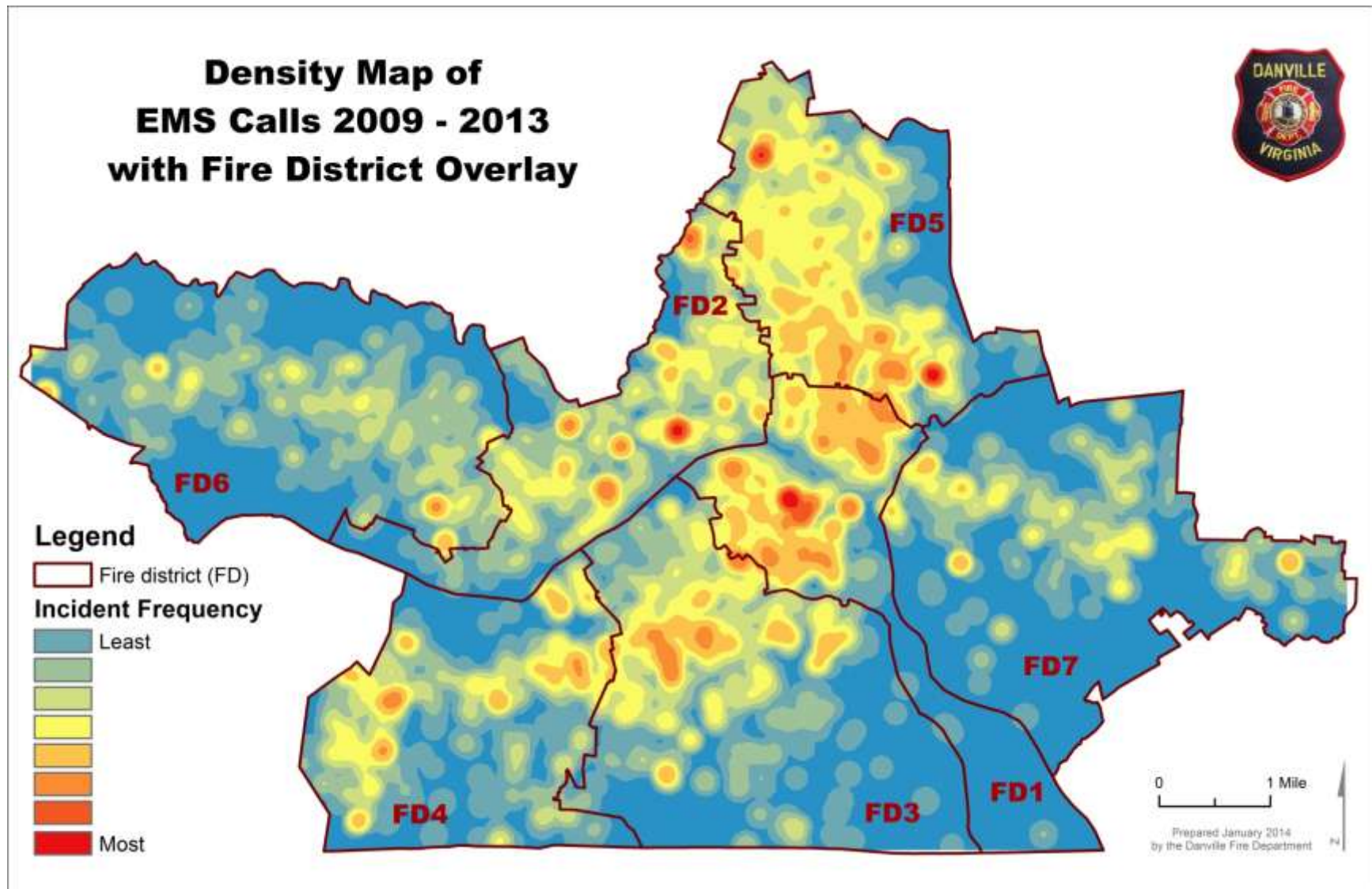


Figure 15: Density Map of Structure Fires 2009-2013 with Fire District Overlay

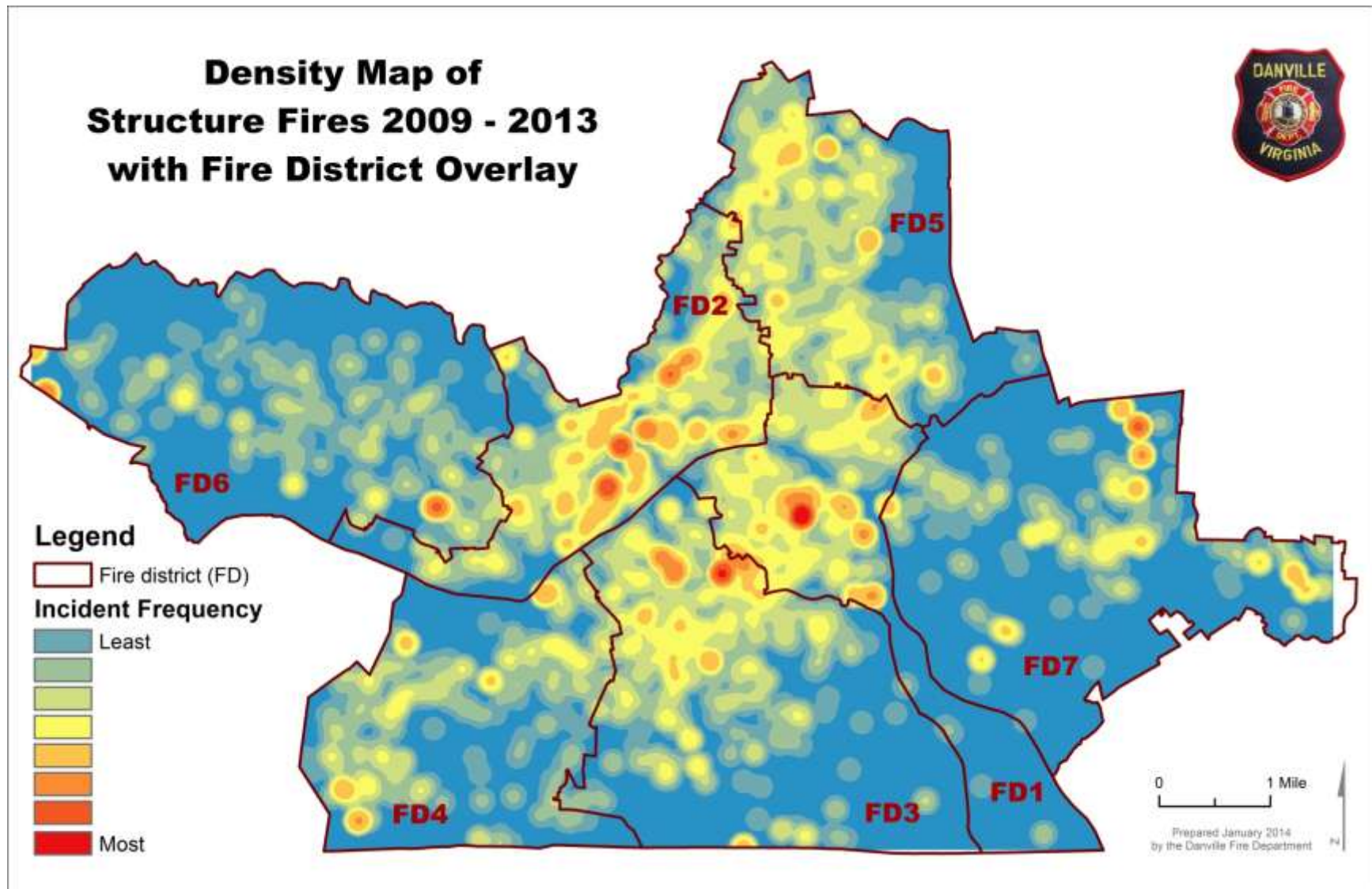


Figure 16: Map of Average Family Income with Fire District Overlay

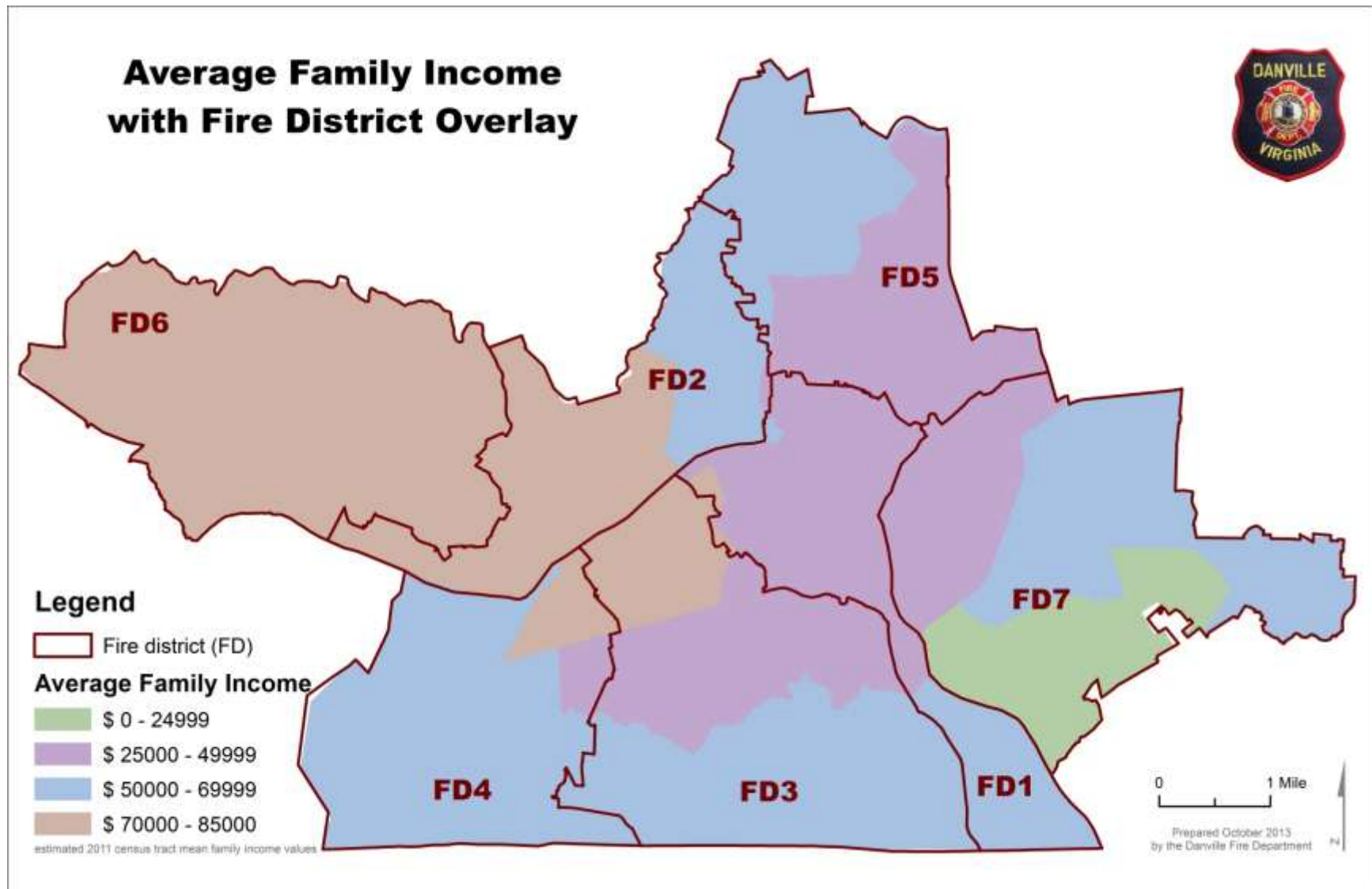


Figure 17: Map of Average Family Income with Unoccupied Housing Units and Fire District Overlays

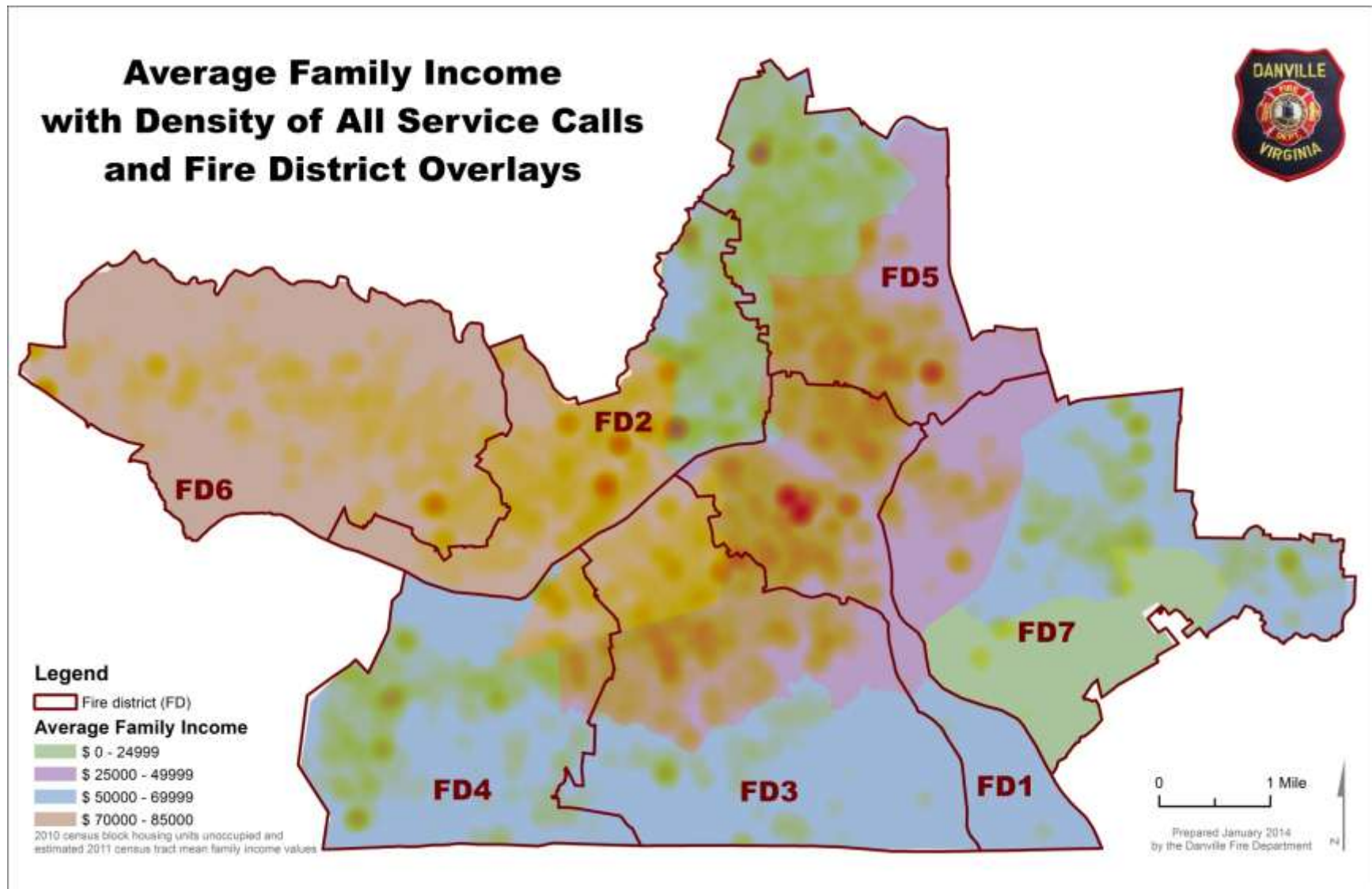


Figure 18: Map of Average Family Income with Density of All Service Calls and Fire District Overlays

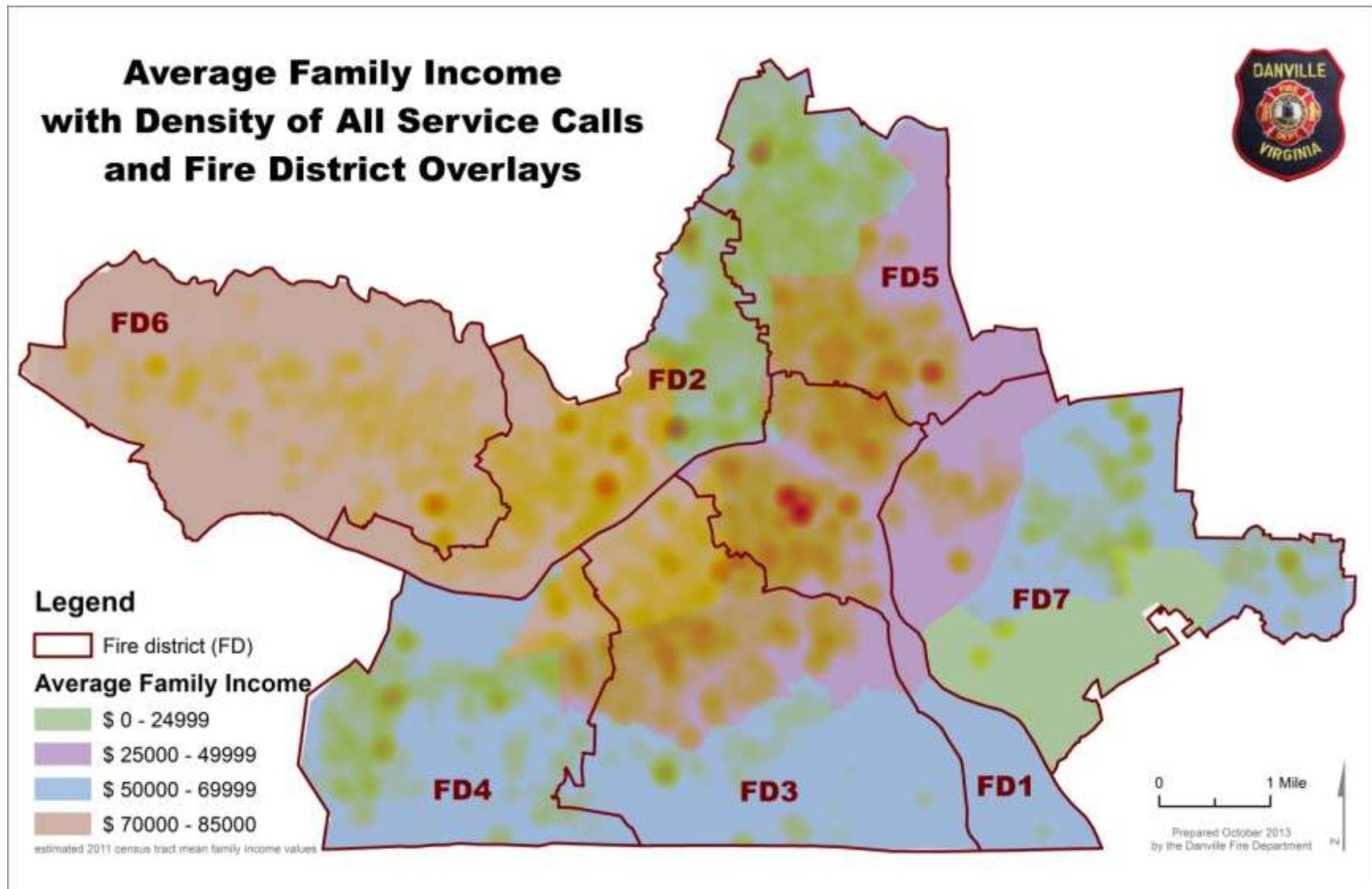


Table 1: Effective Response Force Definitions for Danville's Fire Priority Dispatch System (FPDS) Protocol

Definition of First Alarm Assignment terms:

COD - Chief on Duty
 DLSC - Danville Life Saving Crew
 EMS - Emergency Medical Services (Danville Life Saving Crew or Regional One)
 HMC - Hazardous Materials (Haz-Mat) Coordinator
 HME - Haz-Mat Engine
 PD - Danville Police Department
 RIC - Rapid Intervention Crew (an Engine)
 TRT - Tactical Rescue Team (an Engine)
 TRTC - Tactical Rescue Team Coordinator

Note: Incident deployments involving automatic aide (i.e. DLSC, EMS, PD, etc.) bring specialized equipment and resources to the event, assisting with effective intervention or mitigation of the incident.

Response Category color code assignment:

Response Category	First Alarm Apparatus	Minimum Staff	Support Staff
Basic	1	3	add up to 1
Low	2	7	add up to 3
Moderate	3	10	add up to 4
High	4	15	add up to 7 or more
Special	5	19	add 7 or more

RESPONSE CODE	INCIDENT DESCRIPTION	FIRST ALARM ASSIGNMENT (ERF)	# OF APPAR
F5051D1	AIR CRASH-LAND	2 ENGINE, 1 LADDER, 1 COMMAND, 1 SAFETY	3
F5051D2	AIR CRASH-STRUCTURE	3 ENGINE, 1 LADDER, 1 COMMAND, 1 SAFETY	4
F5051D3	AIRCRAFT FIRE	2 ENGINE, 1 LADDER, 1 COMMAND, 1 SAFETY	3
F5051D5	AIRCRAFT-WATER	2 ENGINE, 1 LADDER, 1 COMMAND, 1 SAFETY, DLSC	3
F5051C1	AIRCRAFT-EMERGENCY II	2 ENGINE, 1 LADDER, 1 COMMAND, 1 SAFETY	3
F5051C2	AIRCRAFT-EMERGENCY I	2 ENGINE, 1 LADDER, 1 COMMAND, 1 SAFETY	3
F5051B1	AIRCRAFT UNKNOWN	1 ENGINE	1
F5051A1	AIRCRAFT STANDBY	1 ENGINE	1
F5051O1	AIRBORNE AIRCRAFT	CONTACT FAA	0
F5051D1L	AIR CRASH-LAND	2 ENGINE, 1 LADDER, 1 COMMAND, 1 SAFETY	3
F5051D2L	AIR CRASH-STRUCTURE	3 ENGINE, 1 LADDER, 1 COMMAD, 1 SAFETY	4
F5051D3L	AIRCRAFT FIRE	2 ENGINE, 1 LADDER, 1 COMMAND, 1 SAFETY	3
F5051D5L	AIRCRAFT-WATER	2 ENGINE, 1 LADDER, 1 COMMAND, 1 SAFETY, DLSC	3
F5051C1L	AIRCRAFT-EMERGENCY II	2 ENGINE, 1 LADDER, 1 COMMAND, 1 SAFETY	3
F5051C2L	AIRCRAFT-EMERGENCY I	2 ENGINE, 1 LADDER, 1 COMMAND, 1 SAFETY	3
F5051B1L	AIRCRAFT UNKNOWN	1 ENGINE	1
F5051A1L	AIRCRAFT STANDBY	1 ENGINE	1
F5051O1L	AIRBORNE AIRCRAFT	CONTACT FAA	0
F5051D1M	AIR CRASH-LAND	2 ENGINE, 1 LADDER, 1 COMMAND, 1 SAFETY	3
F5051D2M	AIR CRASH-STRUCTURE	3 ENGINE, 1 LADDER, 1 COMMAD, 1 SAFETY	4
F5051D3M	AIRCRAFT FIRE	2 ENGINE, 1 LADDER, 1 COMMAND, 1 SAFETY	3
F5051D5M	AIRCRAFT-WATER	2 ENGINE, 1 LADDER, 1 COMMAND, 1 SAFETY, DLSC	3
F5051C1M	AIRCRAFT-EMERGENCY II	2 ENGINE, 1 LADDER, 1 COMMAND, 1 SAFETY	3
F5051C2M	AIRCRAFT-EMERGENCY I	2 ENGINE, 1 LADDER, 1 COMMAND, 1 SAFETY	3
F5051B1M	AIRCRAFT UNKNOWN	1 ENGINE	1
F5051A1M	AIRCRAFT STANDBY	1 ENGINE	1
F5051O1M	AIRBORNE AIRCRAFT	CONTACT FAA	0
F5051D1S	AIR CRASH-LAND	2 ENGINE, 1 LADDER, 1 COMMAND, 1 SAFETY	3
F5051D2S	AIR CRASH-STRUCTURE	3 ENGINE, 1 LADDER, 1 COMMAD, 1 SAFETY	4

RESPONSE CODE	INCIDENT DESCRIPTION	FIRST ALARM ASSIGNMENT (ERF)	# OF APPAR
F5051D3S	AIRCRAFT FIRE	2 ENGINE, 1 LADDER, 1 COMMAND, 1 SAFETY	3
F5051D5S	AIRCRAFT-WATER	2 ENGINE, 1 LADDER, 1 COMMAND, 1 SAFETY, DLSC	3
F5051C1S	AIRCRAFT-EMERGENCY II	2 ENGINE, 1 LADDER, 1 COMMAND, 1 SAFETY	3
F5051C2S	AIRCRAFT-EMERGENCY I	2 ENGINE, 1 LADDER, 1 COMMAND, 1 SAFETY	3
F5051B1S	AIRCRAFT UNKNOWN	1 ENGINE	1
F5051A1S	AIRCRAFT STANDBY	1 ENGINE	1
F5051O1S	AIRBORNE AIRCRAFT	CONTACT FAA	0
F5051D1U	AIR CRASH-LAND	2 ENGINE, 1 LADDER, 1 COMMAND, 1 SAFETY	3
F5051D2U	AIR CRASH-STRUCTURE	3 ENGINE, 1 LADDER, 1 COMMAD, 1 SAFETY	4
F5051D3U	AIRCRAFT FIRE	2 ENGINE, 1 LADDER, 1 COMMAND, 1 SAFETY	3
F5051D5U	AIRCRAFT-WATER	2 ENGINE, 1 LADDER, 1 COMMAND, 1 SAFETY, DLSC	3
F5051C1U	AIRCRAFT-EMERGENCY II	2 ENGINE, 1 LADDER, 1 COMMAND, 1 SAFETY	3
F5051C2U	AIRCRAFT-EMERGENCY I	2 ENGINE, 1 LADDER, 1 COMMAND, 1 SAFETY	3
F5051B1U	AIRCRAFT UNKNOWN	1 ENGINE	1
F5051A1U	AIRCRAFT STANDBY	1 ENGINE	1
F5051O1U	AIRBORNE AIRCRAFT	CONTACT FAA	0
F5052C1	ALARM-HIGH LIFE	1 ENGINE, 1 LADDER	2
F5052C2	ALARM-HIGH RISE	1 ENGINE, 1 LADDER	2
F5052C3	ALARM-COMMERCIAL	1 ENGINE, 1 LADDER	2
F5052C4	ALARM-MULTI RESIDENTIAL	1 ENGINE, 1 LADDER	2
F5052B1	ALARM-RESIDENTIAL	1 ENGINE, 1 LADDER	2
F5052B2	ALARM-NON-DWELLING	1 ENGINE, 1 LADDER	2
F5052B3	ALARM-MOBILE HOME	1 ENGINE, 1 LADDER	2
F5052B4	ALARM-UNKNOWN	1 ENGINE, 1 LADDER	2
F5052C1C	ALARM-HIGH LIFE	1 ENGINE	1
F5052C2C	ALARM-HIGH RISE	1 ENGINE	1
F5052C3C	ALARM-COMMERCIAL	1 ENGINE	1
F5052C4C	ALARM-MULTI RESIDENTIAL	1 ENGINE	1
F5052B1C	ALARM-RESIDENTIAL	1 ENGINE	1

RESPONSE CODE	INCIDENT DESCRIPTION	FIRST ALARM ASSIGNMENT (ERF)	# OF APPAR
F5052B2C	ALARM-NON-DWELLING	1 ENGINE	1
F5052B3C	ALARM-MOBILE HOME	1 ENGINE	1
F5052B4C	ALARM-UNKNOWN	1 ENGINE	1
F5052C1G	ALARM-HIGH LIFE	1 ENGINE, 1 LADDER	2
F5052C2G	ALARM-HIGH RISE	1 ENGINE, 1 LADDER	2
F5052C3G	ALARM-COMMERCIAL	1 ENGINE, 1 LADDER	2
F5052C4G	ALARM-MULTI RESIDENTIAL	1 ENGINE, 1 LADDER	2
F5052B1G	ALARM-RESIDENTIAL	1 ENGINE, 1 LADDER	2
F5052B2G	ALARM-NON-DWELLING	1 ENGINE, 1 LADDER	2
F5052B3G	ALARM-MOBILE HOME	1 ENGINE, 1 LADDER	2
F5052B4G	ALARM-UNKNOWN	1 ENGINE, 1 LADDER	2
F5052C1H	ALARM-HIGH LIFE	1 ENGINE, 1 LADDER	2
F5052C2H	ALARM-HIGH RISE	1 ENGINE, 1 LADDER	2
F5052C3H	ALARM-COMMERCIAL	1 ENGINE, 1 LADDER	2
F5052C4H	ALARM-MULTI RESIDENTIAL	1 ENGINE, 1 LADDER	2
F5052B1H	ALARM-RESIDENTIAL	1 ENGINE, 1 LADDER	2
F5052B2H	ALARM-NON-DWELLING	1 ENGINE, 1 LADDER	2
F5052B3H	ALARM-MOBILE HOME	1 ENGINE, 1 LADDER	2
F5052B4H	ALARM-UNKNOWN	1 ENGINE, 1 LADDER	2
F5052C1I	ALARM-HIGH LIFE	1 ENGINE, 1 LADDER, HMC	2
F5052C2I	ALARM-HIGH RISE	1 ENGINE, 1 LADDER, HMC	2
F5052C3I	ALARM-COMMERCIAL	1 ENGINE, 1 LADDER, HMC	2
F5052C4I	ALARM-MULTI RESIDENTIAL	1 ENGINE, 1 LADDER, HMC	2
F5052B1I	ALARM-RESIDENTIAL	1 ENGINE, 1 LADDER, HMC	2
F5052B2I	ALARM-NON-DWELLING	1 ENGINE, 1 LADDER, HMC	2
F5052B3I	ALARM-MOBILE HOME	1 ENGINE, 1 LADDER, HMC	2
F5052B4I	ALARM-UNKNOWN	1 ENGINE, 1 LADDER, HMC	2
F5052C1K	ALARM-HIGH LIFE	1 ENGINE, 1 LADDER	2
F5052C2K	ALARM-HIGH RISE	1 ENGINE, 1 LADDER	2

RESPONSE CODE	INCIDENT DESCRIPTION	FIRST ALARM ASSIGNMENT (ERF)	# OF APPAR
F5052C3K	ALARM-COMMERCIAL	1 ENGINE, 1 LADDER	2
F5052C4K	ALARM-MULTI RESIDENTIAL	1 ENGINE, 1 LADDER	2
F5052B1K	ALARM-RESIDENTIAL	1 ENGINE, 1 LADDER	2
F5052B2K	ALARM-NON-DWELLING	1 ENGINE, 1 LADDER	2
F5052B3K	ALARM-MOBILE HOME	1 ENGINE, 1 LADDER	2
F5052B4K	ALARM-UNKNOWN	1 ENGINE, 1 LADDER	2
F5052C1O	ALARM-HIGH LIFE	1 ENGINE, 1 LADDER	2
F5052C2O	ALARM-HIGH RISE	1 ENGINE, 1 LADDER	2
F5052C3O	ALARM-COMMERCIAL	1 ENGINE, 1 LADDER	2
F5052C4O	ALARM-MULTI RESIDENTIAL	1 ENGINE, 1 LADDER	2
F5052B1O	ALARM-RESIDENTIAL	1 ENGINE, 1 LADDER	2
F5052B2O	ALARM-NON-DWELLING	1 ENGINE, 1 LADDER	2
F5052B3O	ALARM-MOBILE HOME	1 ENGINE, 1 LADDER	2
F5052B4O	ALARM-UNKNOWN	1 ENGINE, 1 LADDER	2
F5052C1P	ALARM-HIGH LIFE	1 ENGINE, 1 LADDER	2
F5052C2P	ALARM-HIGH RISE	1 ENGINE, 1 LADDER	2
F5052C3P	ALARM-COMMERCIAL	1 ENGINE, 1 LADDER	2
F5052C4P	ALARM-MULTI RESIDENTIAL	1 ENGINE, 1 LADDER	2
F5052B1P	ALARM-RESIDENTIAL	1 ENGINE, 1 LADDER	2
F5052B2P	ALARM-NON-DWELLING	1 ENGINE, 1 LADDER	2
F5052B3P	ALARM-MOBILE HOME	1 ENGINE, 1 LADDER	2
F5052B4P	ALARM-UNKNOWN	1 ENGINE, 1 LADDER	2
F5052C1S	ALARM-HIGH LIFE	1 ENGINE, 1 LADDER	2
F5052C2S	ALARM-HIGH RISE	1 ENGINE, 1 LADDER	2
F5052C3S	ALARM-COMMERCIAL	1 ENGINE, 1 LADDER	2
F5052C4S	ALARM-MULTI RESIDENTIAL	1 ENGINE, 1 LADDER	2
F5052B1S	ALARM-RESIDENTIAL	1 ENGINE, 1 LADDER	2
F5052B2S	ALARM-NON-DWELLING	1 ENGINE, 1 LADDER	2
F5052B3S	ALARM-MOBILE HOME	1 ENGINE, 1 LADDER	2

RESPONSE CODE	INCIDENT DESCRIPTION	FIRST ALARM ASSIGNMENT (ERF)	# OF APPAR
F5052B4S	ALARM-UNKNOWN	1 ENGINE, 1 LADDER	2
F5052C1T	ALARM-HIGH LIFE	1 ENGINE	1
F5052C2T	ALARM-HIGH RISE	1 ENGINE	1
F5052C3T	ALARM-COMMERCIAL	1 ENGINE	1
F5052C4T	ALARM-MULTI RESIDENTIAL	1 ENGINE	1
F5052B1T	ALARM-RESIDENTIAL	1 ENGINE	1
F5052B2T	ALARM-NON-DWELLING	1 ENGINE	1
F5052B3T	ALARM-MOBILE HOME	1 ENGINE	1
F5052B4T	ALARM-UNKNOWN	1 ENGINE	1
F5052C1U	ALARM-HIGH LIFE	1 ENGINE	1
F5052C2U	ALARM-HIGH RISE	1 ENGINE	1
F5052C3U	ALARM-COMMERCIAL	1 ENGINE	1
F5052C4U	ALARM-MULTI RESIDENTIAL	1 ENGINE	1
F5052B1U	ALARM-RESIDENTIAL	1 ENGINE	1
F5052B2U	ALARM-NON-DWELLING	1 ENGINE	1
F5052B3U	ALARM-MOBILE HOME	1 ENGINE	1
F5052B4U	ALARM-UNKNOWN	1 ENGINE	1
F5052C1W	ALARM-HIGH LIFE	1 ENGINE, 1 LADDER	2
F5052C2W	ALARM-HIGH RISE	1 ENGINE, 1 LADDER	2
F5052C3W	ALARM-COMMERCIAL	1 ENGINE, 1 LADDER	2
F5052C4W	ALARM-MULTI RESIDENTIAL	1 ENGINE, 1 LADDER	2
F5052B1W	ALARM-RESIDENTIAL	1 ENGINE, 1 LADDER	2
F5052B2W	ALARM-NON-DWELLING	1 ENGINE, 1 LADDER	2
F5052B3W	ALARM-MOBILE HOME	1 ENGINE, 1 LADDER	2
F5052B4W	ALARM-UNKNOWN	1 ENGINE, 1 LADDER	2
F5053C1	WATER PROBLEM WITH ELECTRIC HAZARD	1 ENGINE	1
F5053C2	SERVICE CALL (MULTIPLE UNITS)	1 ENGINE	1
F5053B1	LOCKED IN VEHICLE	1 ENGINE	1
F5053B2	LOCKED IN/OUT OF BUILDING (POSS MEDICAL ASSISTANCE)	1 ENGINE	1

RESPONSE CODE	INCIDENT DESCRIPTION	FIRST ALARM ASSIGNMENT (ERF)	# OF APPAR
F5053B3	CITIZEN ASSIST (POSSIBLE MEDICAL ASSISTANCE)	1 ENGINE	1
F5053B4	SERVICE CALL (POSSIBLE MEDICAL ASSISTANCE)	1 ENGINE	1
F5053B5 U	NKNOWN SITUATION (POSSIBLE MEDICAL ASSISTANCE)	1 ENGINE	1
F5053A1	LOCKED IN/OUT OF BUILDING (NON-MEDICAL ASSISTANCE)	1 ENGINE	1
F5053A2	CITIZEN ASSIST (NON-MEDICAL ASSISTANCE)	1 ENGINE	1
F5053A3	ANIMAL RESCUE	1 ENGINE	1
F5053A4	WATER PROBLEM	1 ENGINE	1
F5053A5	SERVICE CALL	1 ENGINE	1
F5053A6	UNKNOWN SITUATION (INVESTIGATION)	1 ENGINE	1
F5054D1	CONFINED SPACE/STRUCTURE COLLAPSE ENTRAPMENT (CONFIRMED)	1 ENGINE, 1 LADDER, 1 COMMAND, 1 SAFETY, TRT, EMS	2
F5054D2	CONFINED SPACE/STRUCTURE COLLAPSE-ENTRAPMENT WITH HAZMAT (CONFIRMED)	1 ENGINE, 1 LADDER, 1 COMMAND, 1 SAFETY, HME, EMS	2
F5054C1	CONFINED SPACE/STRUCTURE COLLAPSE-ENTRAPMENT WITH HAZMAT (UNCONFIRMED)	1 ENGINE, 1 LADDER, 1 COMMAND, 1 SAFETY, HME, EMS	2
F5054B1	CONFINED SPACE/STRUCTURAL COLLAPSE (UNCONFIRMED)	1 ENGINE, 1 LADDER, 1 COMMAND, 1 SAFETY, TRT, EMS	2
F5054D1B	CONFINED SPACE/STRUCTURE COLLAPSE ENTRAPMENT (CONFIRMED)	1 ENGINE, 1 LADDER, 1 COMMAND, 1 SAFETY, TRT, EMS	2
F5054D2B	CONFINED SPACE/STRUCTURE COLLAPSE-ENTRAPMENT WITH HAZMAT (CONFIRMED)	1 ENGINE, 1 LADDER, 1 COMMAND, 1 SAFETY, HME, EMS	2
F5054C1B	CONFINED SPACE/STRUCTURE COLLAPSE-ENTRAPMENT WITH HAZMAT (UNCONFIRMED)	1 ENGINE, 1 LADDER, 1 COMMAND, 1 SAFETY, HME, EMS	2
F5054B1B	CONFINED SPACE/STRUCTURAL COLLAPSE (UNCONFIRMED)	1 ENGINE, 1 LADDER, 1 COMMAND, 1 SAFETY, TRT, EMS	2
F5054D1C	CONFINED SPACE/STRUCTURE COLLAPSE ENTRAPMENT (CONFIRMED)	1 ENGINE, 1 LADDER, 1 COMMAND, 1 SAFETY, TRT, EMS	2
F5054D2C	CONFINED SPACE/STRUCTURE COLLAPSE-ENTRAPMENT WITH HAZMAT (CONFIRMED)	1 ENGINE, 1 LADDER, 1 COMMAND, 1 SAFETY, HME, EMS	2
F5054C1C	CONFINED SPACE/STRUCTURE COLLAPSE-ENTRAPMENT WITH HAZMAT (UNCONFIRMED)	1 ENGINE, 1 LADDER, 1 COMMAND, 1 SAFETY, HME, EMS	2
F5054B1C	CONFINED SPACE/STRUCTURAL COLLAPSE (UNCONFIRMED)	1 ENGINE, 1 LADDER, 1 COMMAND, 1 SAFETY, TRT, EMS	2
F5054D1M	CONFINED SPACE/STRUCTURE COLLAPSE ENTRAPMENT (CONFIRMED)	1 ENGINE, 1 LADDER, 1 COMMAND, 1 SAFETY, TRT, EMS	2

RESPONSE CODE	INCIDENT DESCRIPTION	FIRST ALARM ASSIGNMENT (ERF)	# OF APPAR
F5054D2M	CONFINED SPACE/STRUCTURE COLLAPSE-ENTRAPMENT WITH HAZMAT (CONFIRMED)	1 ENGINE, 1 LADDER, 1 COMMAND, 1 SAFETY, HME, EMS	2
F5054C1M	CONFINED SPACE/STRUCTURE COLLAPSE-ENTRAPMENT WITH HAZMAT (UNCONFIRMED)	1 ENGINE, 1 LADDER, 1 COMMAND, 1 SAFETY, HME, EMS	2
F5054B1M	CONFINED SPACE/STRUCTURAL COLLAPSE (UNCONFIRMED)	1 ENGINE, 1 LADDER, 1 COMMAND, 1 SAFETY, TRT, EMS	2
F5054D1T	CONFINED SPACE/STRUCTURE COLLAPSE ENTRAPMENT (CONFIRMED)	1 ENGINE, 1 LADDER, 1 COMMAND, 1 SAFETY, TRT, EMS	2
F5054D2T	CONFINED SPACE/STRUCTURE COLLAPSE-ENTRAPMENT WITH HAZMAT (CONFIRMED)	1 ENGINE, 1 LADDER, 1 COMMAND, 1 SAFETY, HME, EMS	2
F5054C1T	CONFINED SPACE/STRUCTURE COLLAPSE-ENTRAPMENT WITH HAZMAT (UNCONFIRMED)	1 ENGINE, 1 LADDER, 1 COMMAND, 1 SAFETY, HME, EMS	2
F5054B1T	CONFINED SPACE/STRUCTURAL COLLAPSE (UNCONFIRMED)	1 ENGINE, 1 LADDER, 1 COMMAND, 1 SAFETY, TRT, EMS	2
F5054D1U	CONFINED SPACE/STRUCTURE COLLAPSE ENTRAPMENT (CONFIRMED)	1 ENGINE, 1 LADDER, 1 COMMAND, 1 SAFETY, TRT, EMS	2
F5054D2U	CONFINED SPACE/STRUCTURE COLLAPSE-ENTRAPMENT WITH HAZMAT (CONFIRMED)	1 ENGINE, 1 LADDER, 1 COMMAND, 1 SAFETY, HME, EMS	2
F5054C1U	CONFINED SPACE/STRUCTURE COLLAPSE-ENTRAPMENT WITH HAZMAT (UNCONFIRMED)	1 ENGINE, 1 LADDER, 1 COMMAND, 1 SAFETY, HME, EMS	2
F5054B1U	CONFINED SPACE/STRUCTURAL COLLAPSE (UNCONFIRMED)	1 ENGINE, 1 LADDER, 1 COMMAND, 1 SAFETY, TRT, EMS	2
F5055C1 E	LETTRICAL HAZARD- NEAR/IN WATER	1 ENGINE	1
F5055C2	WIRES DOWN WITH SMOKE/ARCING	1 ENGINE	1
F5055B1	ELETRICAL ARCING	1 ENGINE	1
F5055B2	WIRES DOWN NO SMOKE/ARCING	1 ENGINE	1
F5055B3	APPLIANCE WITH ODOR	1 ENGINE	1
F5055B4	ELECTRICAL ODOR	1 ENGINE	1
F5055B5	UNKNOWN SITUATION	1 ENGINE	1
F5055A1	TRANSFORMER OUTSIDE (WIRE/POLE)	1 ENGINE	1
F5055C1P	ELETRICAL HAZARD- NEAR/IN WATER	1 ENGINE	1
F5055C2P	WIRES DOWN WITH SMOKE/ARCING	1 ENGINE	1
F5055B1P	ELETRICAL ARCING	1 ENGINE	1
F5055B2P	WIRES DOWN NO SMOKE/ARCING	1 ENGINE	1
F5055B3P	APPLIANCE WITH ODOR	1 ENGINE	1

RESPONSE CODE	INCIDENT DESCRIPTION	FIRST ALARM ASSIGNMENT (ERF)	# OF APPAR
F5055B4P	ELECTRICAL ODOR	1 ENGINE	1
F5055B5P	UNKNOWN SITUATION	1 ENGINE	1
F5055A1P	TRANSFORMER OUTSIDE (WIRE/POLE)	1 ENGINE	1
F5056D1	ELEVATOR ENTRAPMENT (INJURIES)	1 ENGINE	1
F5056D2	ELEVATOR ACCIDENT	1 ENGINE	1
F5056B1	ELEVATOR MALFUNCTION OCCUPANTS INSIDE (MEDICAL)	1 ENGINE	1
F5056B2	CAUGHT IN ESCALATOR (NO INJURY)	1 ENGINE	1
F5056B3	UNKNOWN SITUATION (INVESTIGATION)	1 ENGINE	1
F5056A1	ELEVATOR MALFUNCTION OCCUPANTS INSIDE (NON-MEDICAL)	1 ENGINE	1
F5056O1	ELEVATOR MALFUNCTION NO OCCUPANTS INSIDE	1 ENGINE	1
F5056O2	ESCALATOR INCIDENT NOT CAUGHT (NO INJURIES)	1 ENGINE	1
F5057D1	EXPLOSION-HIGH LIFE HAZARD	2 ENGINE, 2 LADDER, 1 COMMAND, 1 SAFETY, 1 RIC	4
F5057D2	EXPLOSION-HIGH RISE	2 ENGINE, 2 LADDER, 1 COMMAND, 1 SAFETY, 1 RIC	4
F5057D3	EXPLOSION-COMMERCIAL	2 ENGINE, 2 LADDER, 1 COMMAND, 1 SAFETY, 1 RIC	4
F5057D4	EXPLOSION-RESIDENTIAL (MULTIPLE)	2 ENGINE, 2 LADDER, 1 COMMAND, 1 SAFETY, 1 RIC	4
F5057D5	EXPLOSION-RESIDENTIAL (SINGLE)	2 ENGINE, 2 LADDER, 1 COMMAND, 1 SAFETY, 1 RIC	4
F5057D6	EXPLOSION-LARGE NON-DWELLING STRUCTURE	2 ENGINE, 2 LADDER, 1 COMMAND, 1 SAFETY, 1 RIC	4
F5057D7	EXPLOSION-SMALL NON-DWELLING STRUCTURE	2 ENGINE, 1 LADDER, 1 COMMAND, 1 SAFETY, 1 RIC	3
F5057D8	EXPLOSION-COMMERCIAL VEHICLE	2 ENGINE, 1 LADDER, 1 COMMAND, 1 SAFETY	3
F5057D9	EXPLOSION-LARGE FUEL/LOAD VEHICLE	2 ENGINE, 1 LADDER, 1 COMMAND, 1 SAFETY	3
F5057D10	EXPLOSION-MOBILE HOME, HOUSE TRAILER, PORTABLE OFFICE	2 ENGINE, 1 LADDER, 1 COMMAND, 1 SAFETY, 1 RIC	3
F5057B1	EXPLOSION-VEHICLE	1 ENGINE	1
F5057B2	EXPLOSION-OTHER	1 ENGINE	1
F5057B3	EXPLOSION-UNKNOWN SITUATION	1 ENGINE	1
F5057D1F	EXPLOSION-HIGH LIFE HAZARD	2 ENGINE, 2 LADDER, 1 COMMAND, 1 SAFETY, 1 RIC	4
F5057D2F	EXPLOSION-HIGH RISE	2 ENGINE, 2 LADDER, 1 COMMAND, 1 SAFETY, 1 RIC	4
F5057D3F	EXPLOSION-COMMERCIAL	2 ENGINE, 2 LADDER, 1 COMMAND, 1 SAFETY, 1 RIC	4
F5057D4F	EXPLOSION-RESIDENTIAL (MULTIPLE)	2 ENGINE, 2 LADDER, 1 COMMAND, 1 SAFETY, 1 RIC	4
F5057D5F	EXPLOSION-RESIDENTIAL (SINGLE)	2 ENGINE, 2 LADDER, 1 COMMAND, 1 SAFETY, 1 RIC	4

RESPONSE CODE	INCIDENT DESCRIPTION	FIRST ALARM ASSIGNMENT (ERF)	# OF APPAR
F5057D6F	EXPLOSION-LARGE NON-DWELLING STRUCTURE	2 ENGINE, 2 LADDER, 1 COMMAND, 1 SAFETY, 1 RIC	4
F5057D7F	EXPLOSION-SMALL NON-DWELLING STRUCTURE	2 ENGINE, 1 LADDER, 1 COMMAND, 1 SAFETY, 1 RIC	3
F5057D8F	EXPLOSION-COMMERCIAL VEHICLE	2 ENGINE, 1 LADDER, 1 COMMAND, 1 SAFETY	3
F5057D9F	EXPLOSION-LARGE FUEL/LOAD VEHICLE	2 ENGINE, 1 LADDER, 1 COMMAND, 1 SAFETY	3
F5057D10F	EXPLOSION-MOBILE HOME, HOUSE TRAILER, PORTABLE OFFICE	2 ENGINE, 1 LADDER, 1 COMMAND, 1 SAFETY, 1 RIC	3
F5057B1F	EXPLOSION-VEHICLE	1 ENGINE	1
F5057B2F	EXPLOSION-OTHER	1 ENGINE	1
F5057B3F	EXPLOSION-UNKNOWN SITUATION	1 ENGINE	1
F5058D1	ENTRAPMENT (EXCEPT PERIPHERAL)	1 ENGINE, TRT, TRTC	1
F5058B1	ENTRAPMENT (PERIPHERAL ONLY)	1 ENGINE, TRT, TRTC	1
F5058B2	ENTRAPMENT- UNKNOWN SITUATION	1 ENGINE, TRT, TRTC	1
F5058O1	NO LONGER ENTRAPPED	1 ENGINE, TRT, TRTC	1
F5058D1H	ENTRAPMENT (EXCEPT PERIPHERAL)	1 ENGINE, TRT, HME, HMC, TRTC	1
F5058B1H	ENTRAPMENT (PERIPHERAL ONLY)	1 ENGINE, TRT, HME, HMC, TRTC	1
F5058B2H	ENTRAPMENT- UNKNOWN SITUATION	1 ENGINE, TRT, HME, HMC, TRTC	1
F5058O1H	NO LONGER ENTRAPPED	1 ENGINE, TRT, HME, HMC, TRTC	1
F5059C1	FUEL SPILL-IN OR NEAR WATERWAY	1 ENGINE, HMC	1
F5059C2	FUEL SPILL- LARGE UNCONTAINED SPILL	1 ENGINE, HMC	1
F5059C3	FUEL SPILL- CONTAINED LARGE SPILL	1 ENGINE, HMC	1
F5059C4	FUEL SPILL- UNKNOWN SITUATION	1 ENGINE	1
F5059B1	FUEL SPILL- UNCONTAINED SMALL SPILL	1 ENGINE	1
F5059B2	FUEL SPILL- CONTAINED SMALL SPILL	1 ENGINE	1
F5059C1I	FUEL SPILL-IN OR NEAR WATERWAY	1 ENGINE, HMC, 1 LADDER	2
F5059C2I	FUEL SPILL- LARGE UNCONTAINED SPILL	1 ENGINE, HMC, 1 LADDER	2
F5059C3I	FUEL SPILL- CONTAINED LARGE SPILL	1 ENGINE, HMC, 1 LADDER	2
F5059C4I	FUEL SPILL- UNKNOWN SITUATION	1 ENGINE, HMC, 1 LADDER	2
F5059B1I	FUEL SPILL- UNCONTAINED SMALL SPILL	1 ENGINE, HMC, 1 LADDER	2
F5059B2I	FUEL SPILL- CONTAINED SMALL SPILL	1 ENGINE, HMC, 1 LADDER	2
F5059C1O	FUEL SPILL-IN OR NEAR WATERWAY	1 ENGINE, HMC	1

RESPONSE CODE	INCIDENT DESCRIPTION	FIRST ALARM ASSIGNMENT (ERF)	# OF APPAR
F5059C2O	FUEL SPILL- LARGE UNCONTAINED SPILL	1 ENGINE, HMC	1
F5059C3O	FUEL SPILL- CONTAINED LARGE SPILL	1 ENGINE, HMC	1
F5059C4O	FUEL SPILL- UNKNOWN SITUATION	1 ENGINE	1
F5059B1O	FUEL SPILL- UNCONTAINED SMALL SPILL	1 ENGINE	1
F5059B2O	FUEL SPILL- CONTAINED SMALL SPILL	1 ENGINE	1
F5059C1U	FUEL SPILL-IN OR NEAR WATERWAY	1 ENGINE, HMC	1
F5059C2U	FUEL SPILL- LARGE UNCONTAINED SPILL	1 ENGINE, HMC	1
F5059C3U	FUEL SPILL- CONTAINED LARGE SPILL	1 ENGINE, HMC	1
F5059C4U	FUEL SPILL- UNKNOWN SITUATION	1 ENGINE	1
F5059B1U	FUEL SPILL- UNCONTAINED SMALL SPILL	1 ENGINE	1
F5059B2U	FUEL SPILL- CONTAINED SMALL SPILL	1 ENGINE	1
F5060D1	GAS LEAK- HIGH LIFE HAZARD	3 ENGINE, 1 LADDER, 1 COMMAND, 1 SAFETY	4
F5060D2	GAS LEAK-HIGH RISE	3 ENGINE, 1 LADDER, 1 COMMAND, 1 SAFETY	4
F5060D3	GAS LEAK-COMMERCIAL	3 ENGINE, 1 LADDER, 1 COMMAND, 1 SAFETY	4
F5060D4	GAS LEAK-RESIDENTIAL (MULTIPLE)	3 ENGINE, 1 LADDER, 1 COMMAND, 1 SAFETY	4
F5060C1	GAS LEAK-RESIDENTIAL (SINGLE)	3 ENGINE, 1 LADDER, 1 COMMAND, 1 SAFETY	4
F5060C2	GAS LEAK-OUTSIDE COMMERCIAL TANK >5 GALLONS	1 ENGINE	1
F5060B1	GAS LEAK-OUTSIDE RESIDENTIAL TANK < 5 GALLONS	1 ENGINE	1
F5060B2	GAS LEAK-OUTSIDE ODOR	1 ENGINE	1
F5060D1O	GAS LEAK- HIGH LIFE HAZARD	3 ENGINE, 1 LADDER, 1 COMMAND, 1 SAFETY	4
F5060D2O	GAS LEAK-HIGH RISE	3 ENGINE, 1 LADDER, 1 COMMAND, 1 SAFETY	4
F5060D3O	GAS LEAK-COMMERCIAL	3 ENGINE, 1 LADDER, 1 COMMAND, 1 SAFETY	4
F5060D4O	GAS LEAK-RESIDENTIAL (MULTIPLE)	3 ENGINE, 1 LADDER, 1 COMMAND, 1 SAFETY	4
F5060C1O	GAS LEAK-RESIDENTIAL (SINGLE)	3 ENGINE, 1 LADDER, 1 COMMAND, 1 SAFETY	4
F5060C2O	GAS LEAK-OUTSIDE COMMERCIAL TANK >5 GALLONS	1 ENGINE	1
F5060B1O	GAS LEAK-OUTSIDE RESIDENTIAL TANK < 5 GALLONS	1 ENGINE	1
F5060B2O	GAS LEAK-OUTSIDE ODOR	1 ENGINE	1
F5061D1	HAZMAT-UNCONTAINED HAZMAT	1 ENGINE, HMC	1
F5061D2	HAZMAT-UNCONTAINED ILLEGAL DRUG LAB	1 ENGINE, HMC	1

RESPONSE CODE	INCIDENT DESCRIPTION	FIRST ALARM ASSIGNMENT (ERF)	# OF APPAR
F5061C1	HAZMAT-CONTAINED HAZMAT	1 ENGINE, HMC	1
F5061C2	HAZMAT-CONTAINED ILLEGAL DRUG LAB	1 ENGINE, HMC	1
F5061B1	HAZMAT-SMALL SPILL LESS THAN 5 GALLONS	1 ENGINE, HMC	1
F5061A1	HAZMAT-ABANDONED WASTE	1 ENGINE, HMC	1
F5061D1B	HAZMAT-UNCONTAINED HAZMAT	1 ENGINE, HMC	1
F5061D2B	HAZMAT-UNCONTAINED ILLEGAL DRUG LAB	1 ENGINE, HMC	1
F5061C1B	HAZMAT-CONTAINED HAZMAT	1 ENGINE, HMC	1
F5061C2B H	AZMAT-CONTAINED ILLEGAL DRUG LAB	1 ENGINE, HMC	1
F5061B1B	HAZMAT-SMALL SPILL LESS THAN 5 GALLONS	1 ENGINE, HMC	1
F5061A1B	HAZMAT-ABANDONED WASTE	1 ENGINE, HMC	1
F5061D1C	HAZMAT-UNCONTAINED HAZMAT	1 ENGINE, HMC	1
F5061D2C	HAZMAT-UNCONTAINED ILLEGAL DRUG LAB	1 ENGINE, HMC	1
F5061C1C	HAZMAT-CONTAINED HAZMAT	1 ENGINE, HMC	1
F5061C2C	HAZMAT-CONTAINED ILLEGAL DRUG LAB	1 ENGINE, HMC	1
F5061B1C	HAZMAT-SMALL SPILL LESS THAN 5 GALLONS	1 ENGINE, HMC	1
F5061A1C	HAZMAT-ABANDONED WASTE	1 ENGINE, HMC	1
F5061D1N	HAZMAT-UNCONTAINED HAZMAT	1 ENGINE, HMC	1
F5061D2N	HAZMAT-UNCONTAINED ILLEGAL DRUG LAB	1 ENGINE, HMC	1
F5061C1N	HAZMAT-CONTAINED HAZMAT	1 ENGINE, HMC	1
F5061C2N	HAZMAT-CONTAINED ILLEGAL DRUG LAB	1 ENGINE, HMC	1
F5061B1N	HAZMAT-SMALL SPILL LESS THAN 5 GALLONS	1 ENGINE, HMC	1
F5061A1N	HAZMAT-ABANDONED WASTE	1 ENGINE, HMC	1
F5061D1R	HAZMAT-UNCONTAINED HAZMAT	1 ENGINE, HMC	1
F5061D2R	HAZMAT-UNCONTAINED ILLEGAL DRUG LAB	1 ENGINE, HMC	1
F5061C1R	HAZMAT-CONTAINED HAZMAT	1 ENGINE, HMC	1
F5061C2R	HAZMAT-CONTAINED ILLEGAL DRUG LAB	1 ENGINE, HMC	1
F5061B1R	HAZMAT-SMALL SPILL LESS THAN 5 GALLONS	1 ENGINE, HMC	1
F5061A1R	HAZMAT-ABANDONED WASTE	1 ENGINE, HMC	1
F5061D1U	HAZMAT-UNCONTAINED HAZMAT	1 ENGINE, HMC	1

RESPONSE CODE	INCIDENT DESCRIPTION	FIRST ALARM ASSIGNMENT (ERF)	# OF APPAR
F5061D2U	HAZMAT-UNCONTAINED ILLEGAL DRUG LAB	1 ENGINE, HMC	1
F5061C1U	HAZMAT-CONTAINED HAZMAT	1 ENGINE, HMC	1
F5061C2U	HAZMAT-CONTAINED ILLEGAL DRUG LAB	1 ENGINE, HMC	1
F5061B1U	HAZMAT-SMALL SPILL LESS THAN 5 GALLONS	1 ENGINE, HMC	1
F5061A1U	HAZMAT-ABANDONED WASTE	1 ENGINE, HMC	1
F5062D1	HIGH ANGLE RESCUE	1 ENGINE, 1 LADDER, TRT(E-5), TRTC	2
F5062D2	HIGH ANGLE RESCUE (SUICIDAL PERSON)	1 ENGINE, 1 LADDER, TRT(E-5), TRTC	2
F5062B1	HIGH ANGLE RESCUE- UNKNOWN SITUATION (INVESTIGATION)	1 ENGINE	1
F5062D1A	HIGH ANGLE RESCUE	1 ENGINE, 1 LADDER, TRT(E-5), TRTC	2
F5062D2A	HIGH ANGLE RESCUE (SUICIDAL PERSON)	1 ENGINE, 1 LADDER, TRT(E-5), TRTC	2
F5062B1A	HIGH ANGLE RESCUE- UNKNOWN SITUATION (INVESTIGATION)	1 ENGINE	1
F5062D1B	HIGH ANGLE RESCUE	1 ENGINE, 1 LADDER, TRT(E-5), TRTC	2
F5062D2B	HIGH ANGLE RESCUE (SUICIDAL PERSON)	1 ENGINE, 1 LADDER, TRT(E-5), TRTC	2
F5062B1B	HIGH ANGLE RESCUE- UNKNOWN SITUATION (INVESTIGATION)	1 ENGINE	1
F5063C1	LIGHTNING STRIKE- HIGH LIFE HAZARD	1 ENGINE	1
F5063C2	LIGHTNING STRIKE- HIGH RISE	1 ENGINE	1
F5063C3	LIGHTNING STRIKE- COMMERCIAL/INDUSTRIAL BUILDING	1 ENGINE	1
F5063C4	LIGHTNING STRIKE- RESIDENTIAL (MULTIPLE)	1 ENGINE	1
F5063B1	LIGHTNING STRIKE- RESIDENTIAL (SINGLE)	1 ENGINE	1
F5063B2	LIGHTNING STRIKE- LARGE NON-DWELLING BUILDING	1 ENGINE	1
F5063B3	LIGHTNING STRIKE- SMALL NON-DWELLING BUILDING	1 ENGINE	1
F5063B4	LIGHTNING STRIKE- MOBILE HOME, HOUSE TRAILER, PORTABLE OFFICE	1 ENGINE	1
F5063B5	LIGHTNING STRIKE- OUTSIDE STRIKE	1 ENGINE	1
F5063B6	LIGHTNING STRIKE- INVESTIGATION (UNKNOWN SITUATION)	1 ENGINE	1
F5064D1	MARINE FIRE-THREATENING STRUCTURE	2 ENGINE, 1 LADDER, 1 COMMAND	3
F5064D3	MARINE FIRE- DOCKED IN INLAND WATER	1 ENGINE	1
F5064D5	MARINE FIRE- BEACHED IN INLAND WATER	1 ENGINE	1
F5064D8	MARINE FIRE- INLAND WATER	1 ENGINE	1

RESPONSE CODE	INCIDENT DESCRIPTION	FIRST ALARM ASSIGNMENT (ERF)	# OF APPAR
F5064D9	MARINE FIRE- DRY DOCK/ ON LAND	1 ENGINE	1
F5064B1	MARINE FIRE- EXTINGUISHED FIRE	1 ENGINE	1
F5064D1L	MARINE FIRE-THREATENING STRUCTURE	2 ENGINE, 1 LADDER, 1 COMMAND	3
F5064D3L	MARINE FIRE- DOCKED IN INLAND WATER	2 ENGINE	2
F5064D5L	MARINE FIRE- BEACHED IN INLAND WATER	2 ENGINE	2
F5064D8L	MARINE FIRE- INLAND WATER	2 ENGINE	2
F5064D9L	MARINE FIRE- DRY DOCK/ ON LAND	2 ENGINE	2
F5064B1L	MARINE FIRE- EXTINGUISHED FIRE	2 ENGINE	2
F5064D1M	MARINE FIRE-THREATENING STRUCTURE	2 ENGINE, 1 LADDER, 1 COMMAND	3
F5064D3M	MARINE FIRE- DOCKED IN INLAND WATER	1 ENGINE	1
F5064D5M	MARINE FIRE- BEACHED IN INLAND WATER	1 ENGINE	1
F5064D8M	MARINE FIRE- INLAND WATER	1 ENGINE	1
F5064D9M	MARINE FIRE- DRY DOCK/ ON LAND	1 ENGINE	1
F5064B1M	MARINE FIRE- EXTINGUISHED FIRE	1 ENGINE	1
F5064D1S	MARINE FIRE-THREATENING STRUCTURE	2 ENGINE, 1 LADDER, 1 COMMAND	3
F5064D3S	MARINE FIRE- DOCKED IN INLAND WATER	1 ENGINE	1
F5064D5S	MARINE FIRE- BEACHED IN INLAND WATER	1 ENGINE	1
F5064D8S	MARINE FIRE- INLAND WATER	1 ENGINE	1
F5064D9S	MARINE FIRE- DRY DOCK/ ON LAND	1 ENGINE	1
F5064B1S	MARINE FIRE- EXTINGUISHED FIRE	1 ENGINE	1
F5065D1	MUTUAL AID- MULTIPLE UNITS	CHIEF ON DUTY (COD)	0
F5065D2	MUTUAL AID- OUTSIDE AGENCY	CHIEF ON DUTY (COD)	0
F5065B1	MUTUAL AID- SINGLE UNIT	CHIEF ON DUTY (COD)	0
F5065B2	MUTUAL AID- SINGLE UNIT OUTSIDE AGENCY	CHIEF ON DUTY (COD)	0
F5065A1	MUTUAL AID- MULTIPLE UNITS NON-EMERGENCY	CHIEF ON DUTY (COD)	0
F5065A2	MUTUAL AID- MULTIPLE UNITS OUTSIDE NON-EMERGENCY	CHIEF ON DUTY (COD)	0
F5065A3	MUTUAL AID- UNITS NEEDED	CHIEF ON DUTY (COD)	0
F5065A4	MUTUAL AID- OUTSIDE ASSISTANT	CHIEF ON DUTY (COD)	0
F5065A5	MUTUAL AID- STATION ASSIGNMENT	CHIEF ON DUTY (COD)	0

RESPONSE CODE	INCIDENT DESCRIPTION	FIRST ALARM ASSIGNMENT (ERF)	# OF APPAR
F5065A6	MUTUAL AID- GO TO STAGING AREA	CHIEF ON DUTY (COD)	0
F5066C1	ODOR-INSIDE WITH PATIENTS	1 ENGINE, EMS	1
F5066C2	ODOR- OUTSIDE WITH PATIENTS	1 ENGINE, EMS	1
F5066A1	ODOR- INSIDE	1 ENGINE	1
F5066A2	ODOR- OUTSIDE	1 ENGINE	1
F5067E1	OUTSIDE FIRE- PERSON ON FIRE	1 ENGINE, EMS	1
F5067D1	OUTSIDE FIRE- WILDLAND FIRE	1 ENGINE	1
F5067D2	OUTSIDE FIRE- LARGE BRUSH/GRASS FIRE	1 ENGINE	1
F5067D3	OUTSIDE FIRE- LARGE OUTSIDE FIRE	1 ENGINE	1
F5067D4	OUTSIDE FIRE- OUTSIDE FIRE WITH HAZMATS	1 ENG, 1 LADDER, HMC	1
F5067D5	OUTSIDE FIRE- TANK/FARM/FUEL STORAGE	1 ENGINE	1
F5067B1	OUTSIDE FIRE- SMALL OUTSIDE FIRE	1 ENGINE	1
F5067B2	OUTSIDE FIRE- SMALL OUTSIDE FIRE WITH HAZMATS	1 ENGINE, HMC	1
F5067B3	OUTSIDE FIRE- UNKNOWN SITUATION	1 ENGINE	1
F5067A1	OUTSIDE FIRE- TRANSFORMER WIRE OR POLE	1 ENGINE	1
F5067A2	OUTSIDE FIRE- EXSTINGUISHED	1 ENGINE	1
F5067O1	OUTSIDE FIRE- CONTROLLED BURN	1 ENGINE	1
F5067E1A	OUTSIDE FIRE- PERSON ON FIRE	1 ENGINE, EMS	1
F5067D1A	OUTSIDE FIRE- WILDLAND FIRE	1 ENGINE	1
F5067D2A	OUTSIDE FIRE- LARGE BRUSH/GRASS FIRE	1 ENGINE	1
F5067D3A	OUTSIDE FIRE- LARGE OUTSIDE FIRE	1 ENGINE	1
F5067D4A	OUTSIDE FIRE- OUTSIDE FIRE WITH HAZMATS	1 ENG, 1 LADDER, HMC	1
F5067D5A	OUTSIDE FIRE- TANK/FARM/FUEL STORAGE	1 ENGINE	1
F5067B1A	OUTSIDE FIRE- SMALL OUTSIDE FIRE	1 ENGINE	1
F5067B2A	OUTSIDE FIRE- SMALL OUTSIDE FIRE WITH HAZMATS	1 ENGINE, HMC	1
F5067B3A	OUTSIDE FIRE- UNKNOWN SITUATION	1 ENGINE	1
F5067A1A	OUTSIDE FIRE- TRANSFORMER WIRE OR POLE	1 ENGINE	1
F5067A2A	OUTSIDE FIRE- EXSTINGUISHED	1 ENGINE	1
F5067O1A	OUTSIDE FIRE- CONTROLLED BURN	1 ENGINE	1

RESPONSE CODE	INCIDENT DESCRIPTION	FIRST ALARM ASSIGNMENT (ERF)	# OF APPAR
F5067E1B	OUTSIDE FIRE- PERSON ON FIRE	2 ENGINE, 1 LADDER, 1 COMMAND, EMS	3
F5067D1B	OUTSIDE FIRE- WILDLAND FIRE	2 ENGINE, 1 LADDER, 1 COMMAND	3
F5067D2B	OUTSIDE FIRE- LARGE BRUSH/GRASS FIRE	2 ENGINE, 1 LADDER, 1 COMMAND	3
F5067D3B	OUTSIDE FIRE- LARGE OUTSIDE FIRE	2 ENGINE, 1 LADDER, 1 COMMAND	3
F5067D4B	OUTSIDE FIRE- OUTSIDE FIRE WITH HAZMATS	2 ENGINE, 1 LADDER, 1 COMMAND, HMC	3
F5067D5B	OUTSIDE FIRE- TANK/FARM/FUEL STORAGE	2 ENGINE, 1 LADDER, 1 COMMAND	3
F5067B1B	OUTSIDE FIRE- SMALL OUTSIDE FIRE	2 ENGINE, 1 LADDER, 1 COMMAND	3
F5067B2B	OUTSIDE FIRE- SMALL OUTSIDE FIRE WITH HAZMATS	2 ENGINE, 1 LADDER, 1 COMMAND, HMC	3
F5067B3B	OUTSIDE FIRE- UNKNOWN SITUATION	2 ENGINE, 1 LADDER, 1 COMMAND	3
F5067A1B	OUTSIDE FIRE- TRANSFORMER WIRE OR POLE	2 ENGINE, 1 LADDER, 1 COMMAND	3
F5067A2B	OUTSIDE FIRE- EXTINGUISHED	2 ENGINE, 1 LADDER, 1 COMMAND	3
F5067O1B	OUTSIDE FIRE- CONTROLLED BURN	2 ENGINE, 1 LADDER, 1 COMMAND	3
F5067E1P	OUTSIDE FIRE- PERSON ON FIRE	1 ENGINE, EMS	1
F5067D1P	OUTSIDE FIRE- WILDLAND FIRE	1 ENGINE	1
F5067D2P	OUTSIDE FIRE- LARGE BRUSH/GRASS FIRE	1 ENGINE	1
F5067D3P	OUTSIDE FIRE- LARGE OUTSIDE FIRE	1 ENGINE	1
F5067D4P	OUTSIDE FIRE- OUTSIDE FIRE WITH HAZMATS	1 ENG, 1 LADDER, HMC	1
F5067D5P	OUTSIDE FIRE- TANK/FARM/FUEL STORAGE	1 ENGINE	1
F5067B1P	OUTSIDE FIRE- SMALL OUTSIDE FIRE	1 ENGINE	1
F5067B2	OUTSIDE FIRE- SMALL OUTSIDE FIRE WITH HAZMATS	1 ENGINE, HMC	1
F5067B3P	OUTSIDE FIRE- UNKNOWN SITUATION	1 ENGINE	1
F5067A1P	OUTSIDE FIRE- TRANSFORMER WIRE OR POLE	1 ENGINE	1
F5067A2P	OUTSIDE FIRE- EXTINGUISHED	1 ENGINE	1
F5067O1P	OUTSIDE FIRE- CONTROLLED BURN	1 ENGINE	1
F5067E1R	OUTSIDE FIRE- PERSON ON FIRE	2 ENGINE, 1 LADDER, 1 COMMAND, EMS	3
F5067D1R	OUTSIDE FIRE- WILDLAND FIRE	2 ENGINE, 1 LADDER, 1 COMMAND	3
F5067D2R	OUTSIDE FIRE- LARGE BRUSH/GRASS FIRE	2 ENGINE, 1 LADDER, 1 COMMAND	3
F5067D3R	OUTSIDE FIRE- LARGE OUTSIDE FIRE	2 ENGINE, 1 LADDER, 1 COMMAND	3
F5067D4R	OUTSIDE FIRE- OUTSIDE FIRE WITH HAZMATS	2 ENGINE, 1 LADDER, 1 COMMAND, HMC	3

RESPONSE CODE	INCIDENT DESCRIPTION	FIRST ALARM ASSIGNMENT (ERF)	# OF APPAR
F5067D5R	OUTSIDE FIRE- TANK/FARM/FUEL STORAGE	2 ENGINE, 1 LADDER, 1 COMMAND	3
F5067B1R	OUTSIDE FIRE- SMALL OUTSIDE FIRE	2 ENGINE, 1 LADDER, 1 COMMAND	3
F5067B2R	OUTSIDE FIRE- SMALL OUTSIDE FIRE WITH HAZMATS	2 ENGINE, 1 LADDER, 1 COMMAND, HMC	3
F5067B3R	OUTSIDE FIRE- UNKNOWN SITUATION	2 ENGINE, 1 LADDER, 1 COMMAND	3
F5067A1R	OUTSIDE FIRE- TRANSFORMER WIRE OR POLE	2 ENGINE, 1 LADDER, 1 COMMAND	3
F5067A2R	OUTSIDE FIRE- EXSTINGUISHED	2 ENGINE, 1 LADDER, 1 COMMAND	3
F5067O1R	OUTSIDE FIRE- CONTROLLED BURN	2 ENGINE, 1 LADDER, 1 COMMAND	3
F5067E1U	OUTSIDE FIRE- PERSON ON FIRE	1 ENGINE, EMS	1
F5067D1U	OUTSIDE FIRE- WILDLAND FIRE	1 ENGINE	1
F5067D2U	OUTSIDE FIRE- LARGE BRUSH/GRASS FIRE	1 ENGINE	1
F5067D3U	OUTSIDE FIRE- LARGE OUTSIDE FIRE	1 ENGINE	1
F5067D4U	OUTSIDE FIRE- OUTSIDE FIRE WITH HAZMATS	1 ENG, 1 LADDER, HMC	1
F5067D5U	OUTSIDE FIRE- TANK/FARM/FUEL STORAGE	1 ENGINE	1
F5067B1U	OUTSIDE FIRE- SMALL OUTSIDE FIRE	1 ENGINE	1
F5067B2U	OUTSIDE FIRE- SMALL OUTSIDE FIRE WITH HAZMATS	1 ENGINE, HMC	1
F5067B3U	OUTSIDE FIRE- UNKNOWN SITUATION	1 ENGINE	1
F5067A1U	OUTSIDE FIRE- TRANSFORMER WIRE OR POLE	1 ENGINE	1
F5067A2U	OUTSIDE FIRE- EXSTINGUISHED	1 ENGINE	1
F5067O1U	OUTSIDE FIRE- CONTROLLED BURN	1 ENGINE	1
F5067E1V	OUTSIDE FIRE- PERSON ON FIRE	1 ENGINE, EMS	1
F5067D1V	OUTSIDE FIRE- WILDLAND FIRE	1 ENGINE	1
F5067D2V	OUTSIDE FIRE- LARGE BRUSH/GRASS FIRE	1 ENGINE	1
F5067D3V	OUTSIDE FIRE- LARGE OUTSIDE FIRE	1 ENGINE	1
F5067D4V	OUTSIDE FIRE- OUTSIDE FIRE WITH HAZMATS	1 ENG, 1 LADDER, HMC	1
F5067D5V	OUTSIDE FIRE- TANK/FARM/FUEL STORAGE	1 ENGINE	1
F5067B1V	OUTSIDE FIRE- SMALL OUTSIDE FIRE	1 ENGINE	1
F5067B2V	OUTSIDE FIRE- SMALL OUTSIDE FIRE WITH HAZMATS	1 ENGINE, HMC	1
F5067B3V	OUTSIDE FIRE- UNKNOWN SITUATION	1 ENGINE	1
F5067A1V	OUTSIDE FIRE- TRANSFORMER WIRE OR POLE	1 ENGINE	1

RESPONSE CODE	INCIDENT DESCRIPTION	FIRST ALARM ASSIGNMENT (ERF)	# OF APPAR
F5067A2V	OUTSIDE FIRE- EXTINGUISHED	1 ENGINE	1
F5067O1V	OUTSIDE FIRE- CONTROLLED BURN	1 ENGINE	1
F5068C1	SMOKE INVESTIGATION- HEAVY SMOKE	1 ENGINE	1
F5068A1	SMOKE INVESTIGATION- LIGHT SMOKE	1 ENGINE	1
F5068A2	SMOKE INVESTIGATION- ODOR OF SMOKE	1 ENGINE	1
F5069E1	STRUCTURE FIRE- PERSON ON FIRE INSIDE OF BUILDING	2 ENGINE, 1 LADDER, 1 COMMAND, EMS	3
F5069E1B	STRUCTURE FIRE- PERSON ON FIRE INSIDE OF BUILDING	2 ENGINE, 1 LADDER, 1 COMMAND, EMS	3
F5069E1C	STRUCTURE FIRE- PERSON ON FIRE INSIDE OF BUILDING	2 ENGINE, 1 LADDER, 1 COMMAND, EMS	3
F5069E1H	STRUCTURE FIRE- PERSON ON FIRE INSIDE OF BUILDING	2 ENGINE, 1 LADDER, 1 COMMAND, EMS	3
F5069E1L	STRUCTURE FIRE- PERSON ON FIRE INSIDE OF BUILDING	2 ENGINE, 1 LADDER, 1 COMMAND, EMS	3
F5069E1M	STRUCTURE FIRE- PERSON ON FIRE INSIDE OF BUILDING	2 ENGINE, 1 LADDER, 1 COMMAND, EMS	3
F5069E1S	STRUCTURE FIRE- PERSON ON FIRE INSIDE OF BUILDING	2 ENGINE, 1 LADDER, 1 COMMAND, EMS	3
F5069E1U	STRUCTURE FIRE- PERSON ON FIRE INSIDE OF BUILDING	2 ENGINE, 1 LADDER, 1 COMMAND, EMS	3
F5069E1W	STRUCTURE FIRE- PERSON ON FIRE INSIDE OF BUILDING	2 ENGINE, 1 LADDER, 1 COMMAND, EMS	3
F5069E1X	STRUCTURE FIRE- PERSON ON FIRE INSIDE OF BUILDING	2 ENGINE, 1 LADDER, 1 COMMAND, EMS	3
F5069E1Y	STRUCTURE FIRE- PERSON ON FIRE INSIDE OF BUILDING	2 ENGINE, 1 LADDER, 1 COMMAND, EMS	3
F5069E1Z	STRUCTURE FIRE- PERSON ON FIRE INSIDE OF BUILDING	2 ENGINE, 1 LADDER, 1 COMMAND, EMS	3
F5069D1	STRUCTURE FIRE- HIGH LIFE HAZARD	2 ENGINE, 2 LADDER, 1 COMMAND, 1 SAFETY, 1 RIC	4
F5069D2	STRUCTURE FIRE- HIGH RISE	2 ENGINE, 2 LADDER, 1 COMMAND, 1 SAFETY, 1 RIC	4
F5069D3	STRUCTURE FIRE- COMMERCIAL/INDUSTRIAL BUILDING	2 ENGINE, 2 LADDER, 1 COMMAND, 1 SAFETY, 1 RIC	4
F5069D4	STRUCTURE FIRE- COMMERCIAL/INDUSTRIAL WITH HAZMATS	2 ENGINE, 2 LADDER, 1 COMMAND, 1 SAFETY, 1 RIC, 1 HMC	4
F5069D5	STRUCTURE FIRE- RESIDENTIAL (MULTIPLE)	2 ENGINE, 2 LADDER, 1 COMMAND, 1 SAFETY, 1 RIC	4
F5069D6	STRUCTURE FIRE- RESIDENTIAL (SINGLE)	2 ENGINE, 1 LADDER, 1 COMMAND, 1 SAFETY, 1 RIC	3
F5069D7	STRUCTURE FIRE- CHIMNEY FIRE	2 ENGINE, 1 LADDER, 1 COMMAND, 1 RIC	3
F5069D8	STRUCTURE FIRE- LARGE NON-DWELLING	2 ENGINE, 1 LADDER, 1 COMMAND, 1 RIC	3
F5069D9	STRUCTURE FIRE- SMALL NON-DWELLING	2 ENGINE, 1 LADDER, 1 COMMAND, 1 RIC	3
F5069D10	STRUCTURE FIRE- MOBILE HOME, TRAILER, PORTABLE OFFICE	2 ENGINE, 1 LADDER, 1 COMMAND, 1 RIC, 1 SAFETY	3
F5069D11	STRUCTURE FIRE- UNKNOWN SITUATION	2 ENGINE, 1 LADDER, 1 COMMAND, 1 RIC, 1 SAFETY	3
F5069C1	STRUCTURE FIRE- APPLIANCE (CONTAINED)	2 ENGINE, 1 LADDER, 1 COMMAND, 1 RIC, 1 SAFETY	3

RESPONSE CODE	INCIDENT DESCRIPTION	FIRST ALARM ASSIGNMENT (ERF)	# OF APPAR
F5069C2	STRUCTURE FIRE- EXTINGUISHED FIRE	2 ENGINE, 1 LADDER, 1 COMMAND, 1 RIC, 1 SAFETY	3
F5069E1O	STRUCTURE FIRE- PERSON OF FIRE	2 ENGINE, 1 LADDER, 1 COMMAND, EMS	3
F5069D1O	STRUCTURE FIRE- HIGH LIFE HAZARD	2 ENGINE, 2 LADDER, 1 COMMAND, 1 RIC	4
F5069D2O	STRUCTURE FIRE- HIGH RISE	2 ENGINE, 2 LADDER, 1 COMMAND, 1 RIC	4
F5069D3O	STRUCTURE FIRE- COMMERCIAL	2 ENGINE, 2 LADDER, 1 COMMAND, 1 RIC	4
F5069D4O	STRUCTURE FIRE- COMMERCIAL WITH HAZMATs	2 ENGINE, 2 LADDER, 1 COMMAND, 1 RIC, 1 HMC	4
F5069D5O	STRUCTURE FIRE- RESIDENTIAL (MULTIPLE)	2 ENGINE, 2 LADDER, 1 COMMAND, 1 RIC	4
F5069D6O	STRUCTURE FIRE- RESIDENTIAL (SINGLE)	2 ENGINE, 1 LADDER, 1 COMMAND, 1 RIC	3
F5069D7O	STRUCTURE FIRE- CHIMNEY FIRE	2 ENGINE, 1 LADDER, 1 COMMAND, 1 RIC	3
F5069D8O	STRUCTURE FIRE- LARGE NON-DWELLING	2 ENGINE, 1 LADDER, 1 COMMAND, 1 RIC	3
F5069D9O	STRUCTURE FIRE- SMALL NON-DWELLING	2 ENGINE, 1 LADDER, 1 COMMAND, 1 RIC	3
F5069D10O	STRUCTURE FIRE- MOBILE HOME, TRAILER, PORTABLE OFFICE	2 ENGINE, 1 LADDER, 1 COMMAND, 1 RIC	3
F5069D11O	STRUCTURE FIRE- UNKNOWN SITUATION	2 ENGINE, 1 LADDER, 1 COMMAND, 1 RIC	3
F5069C1O	STRUCTURE FIRE- APPLIANCE (CONTAINED)	2 ENGINE, 1 LADDER, 1 COMMAND, 1 RIC	3
F5069C2O	STRUCTURE FIRE- EXTINGUISHED FIRE	2 ENGINE, 1 LADDER, 1 COMMAND, 1 RIC	3
F5069E1T	STRUCTURE FIRE- PERSON OF FIRE	2 ENGINE, 1 LADDER, 1 COMMAND, 1 SAFETY, EMS	3
F5069D1T	STRUCTURE FIRE- HIGH LIFE HAZARD	2 ENGINE, 2 LADDER, 1 COMMAND, 1 SAFETY, 1 RIC	4
F5069D2T	STRUCTURE FIRE- HIGH RISE	2 ENGINE, 2 LADDER, 1 COMMAND, 1 SAFETY, 1 RIC	4
F5069D3T	STRUCTURE FIRE- COMMERCIAL	2 ENGINE, 2 LADDER, 1 COMMAND, 1 SAFETY, 1 RIC	4
F5069D4T	STRUCTURE FIRE- COMMERCIAL WITH HAZMATs	2 ENGINE, 2 LADDER, 1 COMMAND, 1 SAFETY, 1 RIC, 1 HMC	4
F5069D5T	STRUCTURE FIRE- RESIDENTIAL (MULTIPLE)	2 ENGINE, 2 LADDER, 1 COMMAND, 1 SAFETY, 1 RIC	4
F5069D6T	STRUCTURE FIRE- RESIDENTIAL (SINGLE)	2 ENGINE, 1 LADDER, 1 COMMAND, 1 SAFETY, 1 RIC	3
F5069D7T	STRUCTURE FIRE- CHIMNEY FIRE	2 ENGINE, 1 LADDER, 1 COMMAND, 1 RIC, 1 SAFETY	3
F5069D8T	STRUCTURE FIRE- LARGE NON-DWELLING	2 ENGINE, 1 LADDER, 1 COMMAND, 1 RIC, 1 SAFETY	3
F5069D9T	STRUCTURE FIRE- SMALL NON-DWELLING	2 ENGINE, 1 LADDER, 1 COMMAND, 1 RIC, 1 SAFETY	3
F5069D10T	STRUCTURE FIRE- MOBILE HOME, TRAILER, PORTABLE OFFICE	2 ENGINE, 1 LADDER, 1 COMMAND, 1 RIC, 1 SAFETY	3
F5069D11T	STRUCTURE FIRE- UNKNOWN SITUATION	2 ENGINE, 1 LADDER, 1 COMMAND, 1 RIC, 1 SAFETY	3
F5069C1T	STRUCTURE FIRE- APPLIANCE (CONTAINED)	2 ENGINE, 1 LADDER, 1 COMMAND, 1 RIC, 1 SAFETY	3
F5069C2T	STRUCTURE FIRE- EXTINGUISHED FIRE	2 ENGINE, 1 LADDER, 1 COMMAND, 1 RIC, 1 SAFETY	3

RESPONSE CODE	INCIDENT DESCRIPTION	FIRST ALARM ASSIGNMENT (ERF)	# OF APPAR
F5070D1	TRAIN COLLISION- PERSON TRAPPED BY TRAIN(NO COLLISION)	3 ENGINE, 2 LADDER, 1 COMMAND, 1 SAFETY	5
F5070D2	TRAIN COLLISION- COLLISION INVOLVING STRUCTURES	3 ENGINE, 2 LADDER, 1 COMMAND, 1 SAFETY	5
F5070D3	TRAIN COLLISION- COLLISION INVOLVING VEHICLES	3 ENGINE, 2 LADDER, 1 COMMAND, 1 SAFETY	5
F5070D4	TRAIN COLLISION- BELOW GROUND LEVEL COLLISION	3 ENGINE, 2 LADDER, 1 COMMAND, 1 SAFETY	5
F5070D5	TRAIN COLLISION- ABOVE GROUND LEVEL COLLISION	3 ENGINE, 2 LADDER, 1 COMMAND, 1 SAFETY	5
F5070D6	TRAIN COLLISION- AT GROUND LEVEL COLLISION	3 ENGINE, 2 LADDER, 1 COMMAND, 1 SAFETY	5
F5070D7	TRAIN COLLISION- IN TUNNEL	3 ENGINE, 2 LADDER, 1 COMMAND, 1 SAFETY	5
F5070D8	TRAIN COLLISION- ON BRIDGE OR TRAIN TRESTLE	3 ENGINE, 2 LADDER, 1 COMMAND, 1 SAFETY	5
F5070C1	TRAIN COLLISION- LARGE FUEL LOAD ON TRACKS	3 ENGINE, 2 LADDER, 1 COMMAND, 1 SAFETY	5
F5070C2	TRAIN COLLISION- COMMERCIAL VEHICLE ON TRACKS	3 ENGINE, 2 LADDER, 1 COMMAND, 1 SAFETY	5
F5070C3	TRAIN COLLISION- OTHER VEHICLE ON TRACKS	3 ENGINE, 2 LADDER, 1 COMMAND, 1 SAFETY	5
F5070C4	TRAIN COLLISION- UNKNOWN SITUATION	3 ENGINE, 2 LADDER, 1 COMMAND, 1 SAFETY	5
F5070D1F	TRAIN COLLISION- PERSON TRAPPED BY TRAIN(NO COLLISION)	3 ENGINE, 2 LADDER, 1 COMMAND, 1 SAFETY	5
F5070D2F	TRAIN COLLISION- COLLISION INVOLVING STRUCTURES	3 ENGINE, 2 LADDER, 1 COMMAND, 1 SAFETY	5
F5070D3F	TRAIN COLLISION- COLLISION INVOLVING VEHICLES	3 ENGINE, 2 LADDER, 1 COMMAND, 1 SAFETY	5
F5070D4F	TRAIN COLLISION- BELOW GROUND LEVEL COLLISION	3 ENGINE, 2 LADDER, 1 COMMAND, 1 SAFETY	5
F5070D5F	TRAIN COLLISION- ABOVE GROUND LEVEL COLLISION	3 ENGINE, 2 LADDER, 1 COMMAND, 1 SAFETY	5
F5070D6F	TRAIN COLLISION- AT GROUND LEVEL COLLISION	3 ENGINE, 2 LADDER, 1 COMMAND, 1 SAFETY	5
F5070D7F	TRAIN COLLISION- IN TUNNEL	3 ENGINE, 2 LADDER, 1 COMMAND, 1 SAFETY	5
F5070D8F	TRAIN COLLISION- ON BRIDGE OR TRAIN TRESTLE	3 ENGINE, 2 LADDER, 1 COMMAND, 1 SAFETY	5
F5070C1F	TRAIN COLLISION- LARGE FUEL LOAD ON TRACKS	3 ENGINE, 2 LADDER, 1 COMMAND, 1 SAFETY	5
F5070C2F	TRAIN COLLISION- COMMERCIAL VEHICLE ON TRACKS	3 ENGINE, 2 LADDER, 1 COMMAND, 1 SAFETY	5
F5070C3F	TRAIN COLLISION- OTHER VEHICLE ON TRACKS	3 ENGINE, 2 LADDER, 1 COMMAND, 1 SAFETY	5
F5070C4F	TRAIN COLLISION- UNKNOWN SITUATION	3 ENGINE, 2 LADDER, 1 COMMAND, 1 SAFETY	5
F5070D1L	TRAIN COLLISION- PERSON TRAPPED BY TRAIN(NO COLLISION)	3 ENGINE, 2 LADDER, 1 COMMAND, 1 SAFETY	5
F5070D2L	TRAIN COLLISION- COLLISION INVOLVING STRUCTURES	3 ENGINE, 2 LADDER, 1 COMMAND, 1 SAFETY	5
F5070D3L	TRAIN COLLISION- COLLISION INVOLVING VEHICLES	3 ENGINE, 2 LADDER, 1 COMMAND, 1 SAFETY	5
F5070D4L	TRAIN COLLISION- BELOW GROUND LEVEL COLLISION	3 ENGINE, 2 LADDER, 1 COMMAND, 1 SAFETY	5
F5070D5L	TRAIN COLLISION- ABOVE GROUND LEVEL COLLISION	3 ENGINE, 2 LADDER, 1 COMMAND, 1 SAFETY	5

RESPONSE CODE	INCIDENT DESCRIPTION	FIRST ALARM ASSIGNMENT (ERF)	# OF APPAR
F5070D6L	TRAIN COLLISION- AT GROUND LEVEL COLLISION	3 ENGINE, 2 LADDER, 1 COMMAND, 1 SAFETY	5
F5070D7L	TRAIN COLLISION- IN TUNNEL	3 ENGINE, 2 LADDER, 1 COMMAND, 1 SAFETY	5
F5070D8L	TRAIN COLLISION- ON BRIDGE OR TRAIN TRESTLE	3 ENGINE, 2 LADDER, 1 COMMAND, 1 SAFETY	5
F5070C1L	TRAIN COLLISION- LARGE FUEL LOAD ON TRACKS	3 ENGINE, 2 LADDER, 1 COMMAND, 1 SAFETY	5
F5070C2L	TRAIN COLLISION- COMMERCIAL VEHICLE ON TRACKS	3 ENGINE, 2 LADDER, 1 COMMAND, 1 SAFETY	5
F5070C3L	TRAIN COLLISION- OTHER VEHICLE ON TRACKS	3 ENGINE, 2 LADDER, 1 COMMAND, 1 SAFETY	5
F5070C4L	TRAIN COLLISION- UNKNOWN SITUATION	3 ENGINE, 2 LADDER, 1 COMMAND, 1 SAFETY	5
F5070D1O	TRAIN COLLISION- PERSON TRAPPED BY TRAIN (NO COLLISION)	3 ENGINE, 2 LADDER, 1 COMMAND, 1 SAFETY	5
F5070D2O	TRAIN COLLISION- COLLISION INVOLVING STRUCTURES	3 ENGINE, 2 LADDER, 1 COMMAND, 1 SAFETY	5
F5070D3O	TRAIN COLLISION- COLLISION INVOLVING VEHICLES	3 ENGINE, 2 LADDER, 1 COMMAND, 1 SAFETY	5
F5070D4O	TRAIN COLLISION- BELOW GROUND LEVEL COLLISION	3 ENGINE, 2 LADDER, 1 COMMAND, 1 SAFETY	5
F5070D5O	TRAIN COLLISION- ABOVE GROUND LEVEL COLLISION	3 ENGINE, 2 LADDER, 1 COMMAND, 1 SAFETY	5
F5070D6O	TRAIN COLLISION- AT GROUND LEVEL COLLISION	3 ENGINE, 2 LADDER, 1 COMMAND, 1 SAFETY	5
F5070D7O	TRAIN COLLISION- IN TUNNEL	3 ENGINE, 2 LADDER, 1 COMMAND, 1 SAFETY	5
F5070D8O	TRAIN COLLISION- ON BRIDGE OR TRAIN TRESTLE	3 ENGINE, 2 LADDER, 1 COMMAND, 1 SAFETY	5
F5070C1O	TRAIN COLLISION- LARGE FUEL LOAD ON TRACKS	3 ENGINE, 2 LADDER, 1 COMMAND, 1 SAFETY	5
F5070C2O	TRAIN COLLISION- COMMERCIAL VEHICLE ON TRACKS	3 ENGINE, 2 LADDER, 1 COMMAND, 1 SAFETY	5
F5070C3O	TRAIN COLLISION- OTHER VEHICLE ON TRACKS	3 ENGINE, 2 LADDER, 1 COMMAND, 1 SAFETY	5
F5070C4O	TRAIN COLLISION- UNKNOWN SITUATION	3 ENGINE, 2 LADDER, 1 COMMAND, 1 SAFETY	5
F5070D1P	TRAIN COLLISION- PERSON TRAPPED BY TRAIN (NO COLLISION)	3 ENGINE, 2 LADDER, 1 COMMAND, 1 SAFETY	5
F5070D2P	TRAIN COLLISION- COLLISION INVOLVING STRUCTURES	3 ENGINE, 2 LADDER, 1 COMMAND, 1 SAFETY	5
F5070D3P	TRAIN COLLISION- COLLISION INVOLVING VEHICLES	3 ENGINE, 2 LADDER, 1 COMMAND, 1 SAFETY	5
F5070D4P	TRAIN COLLISION- BELOW GROUND LEVEL COLLISION	3 ENGINE, 2 LADDER, 1 COMMAND, 1 SAFETY	5
F5070D5P	TRAIN COLLISION- ABOVE GROUND LEVEL COLLISION	3 ENGINE, 2 LADDER, 1 COMMAND, 1 SAFETY	5
F5070D6P	TRAIN COLLISION- AT GROUND LEVEL COLLISION	3 ENGINE, 2 LADDER, 1 COMMAND, 1 SAFETY	5
F5070D7P	TRAIN COLLISION- IN TUNNEL	3 ENGINE, 2 LADDER, 1 COMMAND, 1 SAFETY	5
F5070D8P	TRAIN COLLISION- ON BRIDGE OR TRAIN TRESTLE	3 ENGINE, 2 LADDER, 1 COMMAND, 1 SAFETY	5
F5070C1P	TRAIN COLLISION- LARGE FUEL LOAD ON TRACKS	3 ENGINE, 2 LADDER, 1 COMMAND, 1 SAFETY	5
F5070C2P	TRAIN COLLISION- COMMERCIAL VEHICLE ON TRACKS	3 ENGINE, 2 LADDER, 1 COMMAND, 1 SAFETY	5

RESPONSE CODE	INCIDENT DESCRIPTION	FIRST ALARM ASSIGNMENT (ERF)	# OF APPAR
F5070C3P	TRAIN COLLISION- OTHER VEHICLE ON TRACKS	3 ENGINE, 2 LADDER, 1 COMMAND, 1 SAFETY	5
F5070C4P	TRAIN COLLISION- UNKNOWN SITUATION	3 ENGINE, 2 LADDER, 1 COMMAND, 1 SAFETY	5
F5071D1	VEHICLE FIRE- OCCUPANTS TRAPPED	1 ENGINE, 1 LADDER, 1 COMMAND, 1 SAFETY, 1 EMS	2
F5071D3	VEHICLE FIRE- VEHICLE FIRE THREATNEING A STRUCTURE	2 ENGINE, 1 LADDER, 1 COMMAND, 1 SAFETY, 1 RIC	3
F5071D4	VEHICLE FIRE- COMMERCIAL FIRE	1 ENGINE, 1 LADDER	2
F5071D5	VEHICLE FIRE- LARGE FUEL LOAD VEHICLE	1 ENGINE, 1 LADDER	2
F5071C1	VEHICLE FIRE- FIRE THREATNING NONSTRUCTURE OBJECT	1 ENGINE	1
F5071C2	VEHICLE FIRE- PARKING GARAGE	1 ENGINE	1
F5071B1	VEHICLE FIRE- VEHICLE ON FIRE	1 ENGINE	1
F5071B2	VEHICLE FIRE- COMMERCIAL VEHICLE EXTINGUISHED	1 ENGINE	1
F5071A1	VEHICLE FIRE- VEHICLE FIRE EXTINGUISHED	1 ENGINE	1
F5071D1A	VEHICLE FIRE- OCCUPANTS TRAPPED	1 ENGINE, 1 LADDER, 1 COMMAND, 1 SAFETY, 1 EMS	2
F5071D3A	VEHICLE FIRE- VEHICLE FIRE THREATNEING A STRUCTURE	2 ENGINE, 1 LADDER, 1 COMMAND, 1 SAFETY, 1 RIC	3
F5071D4A	VEHICLE FIRE- COMMERCIAL FIRE	1 ENGINE, 1 LADDER	2
F5071D5A	VEHICLE FIRE- LARGE FUEL LOAD VEHICLE	1 ENGINE, 1 LADDER	2
F5071C1A	VEHICLE FIRE- FIRE THREATNING NONSTRUCTURE OBJECT	1 ENGINE	1
F5071C2A	VEHICLE FIRE- PARKING GARAGE	1 ENGINE	1
F5071B1A	VEHICLE FIRE- VEHICLE ON FIRE	1 ENGINE	1
F5071B2A	VEHICLE FIRE- COMMERCIAL VEHICLE EXTINGUISHED	1 ENGINE	1
F5071A1A	VEHICLE FIRE- VEHICLE FIRE EXTINGUISHED	1 ENGINE	1
F5071D1H	VEHICLE FIRE- OCCUPANTS TRAPPED	1 ENGINE, 1 LADDER, 1 COMMAND, 1 SAFETY, 1 EMS, HMC	2
F5071D3H	VEHICLE FIRE- VEHICLE FIRE THREATNEING A STRUCTURE	2 ENGINE, 1 LADDER, 1 COMMAND, 1 SAFETY, 1 RIC, HMC	3
F5071D4H	VEHICLE FIRE- COMMERCIAL FIRE	1 ENGINE, 1 LADDER, HMC	2
F5071D5H	VEHICLE FIRE- LARGE FUEL LOAD VEHICLE	1 ENGINE, 1 LADDER, HMC	2
F5071C1H	VEHICLE FIRE- FIRE THREATNING NONSTRUCTURE OBJECT	1 ENGINE, HMC	1
F5071C2H	VEHICLE FIRE- PARKING GARAGE	1 ENGINE, HMC	1
F5071B1H	VEHICLE FIRE- VEHICLE ON FIRE	1 ENGINE, HMC	1
F5071B2H	VEHICLE FIRE- COMMERCIAL VEHICLE EXTINGUISHED	1 ENGINE, HMC	1
F5071A1H	VEHICLE FIRE- VEHICLE FIRE EXTINGUISHED	1 ENGINE, HMC	1

RESPONSE CODE	INCIDENT DESCRIPTION	FIRST ALARM ASSIGNMENT (ERF)	# OF APPAR
F5071D1Y	VEHICLE FIRE- OCCUPANTS TRAPPED	1 ENGINE, 1 LADDER, 1 COMMAND, 1 SAFETY, 1 EMS, HMC	2
F5071D3Y	VEHICLE FIRE- VEHICLE FIRE THREATNEING A STRUCTURE	2 ENGINE, 1 LADDER, 1 COMMAND, 1 SAFETY, 1 RIC, HMC	3
F5071D4Y	VEHICLE FIRE- COMMERCIAL FIRE	1 ENGINE, 1 LADDER, HMC	2
F5071D5Y	VEHICLE FIRE- LARGE FUEL LOAD VEHICLE	1 ENGINE, 1 LADDER, HMC	2
F5071C1Y	VEHICLE FIRE- FIRE THREATNING NONSTRUCTURE OBJECT	1 ENGINE, HMC	1
F5071C2Y	VEHICLE FIRE- PARKING GARAGE	1 ENGINE, HMC	1
F5071B1Y	VEHICLE FIRE- VEHICLE ON FIRE	1 ENGINE, HMC	1
F5071B2Y	VEHICLE FIRE- COMMERCIAL VEHICLE EXTINGUISHED	1 ENGINE, HMC	1
F5071A1Y	VEHICLE FIRE- VEHICLE FIRE EXTINGUISHED	1 ENGINE, HMC	1
F5072E1	WATER RESCUE- SINKING VEHICLE	1 ENGINE, TRT (Engine 5), DLSC	1
F5072D1	WATER RESCUE- ICE RESCUE	1 ENGINE, TRT (Engine 5), DLSC	1
F5072D2	WATER RESCUE- SWIFT WATER RESCUE	1 ENGINE, TRT (Engine 5), DLSC	1
F5072D3	WATER RESCUE- SCUBA DIVE ACCIDENT	1 ENGINE, TRT (Engine 5), DLSC	1
F5072D4	WATER RESCUE- SWIMMING POOL ACCIDENT	1 ENGINE, TRT (Engine 5), DLSC	1
F5072D6	WATER RESCUE- INLAND WATER RESCUE	1 ENGINE, TRT (Engine 5), DLSC	1
F5072D8	WATER RESCUE- LARGE FLOOD WATER RESCUE	1 ENGINE, TRT (Engine 5), DLSC	1
F5072D9	WATER RESCUE- SMALL FLOOD WATER RESCUE	1 ENGINE, TRT (Engine 5), DLSC	1
F5072D10	WATER RESCUE- QUICK SAND/MUD RESCUE	1 ENGINE, TRT (Engine 5), DLSC	1
F5072B1	WATER RESCUE- STRANDED MOTORIST NON-THREATENED	1 ENGINE, TRT (Engine 5), DLSC	1
F5072B2	WATER RESCUE- UNKNOWN SITUATION	1 ENGINE, TRT (Engine 5), DLSC	1
F5072A1	WATER RESCUE- ANIMAL RESCUE	1 ENGINE, TRT (Engine 5), DLSC	1
F5072A2	WATER RESCUE- BODY RECOVERY	1 ENGINE, TRT (Engine 5), DLSC	1
F5073D1	WATERCRAFT DISTRESS- TAKING ON WATER	1 ENGINE, DLSC	1
F5073D2	WATERCRAFT DISTRESS- FLAR SIGNTING ORANGE OR RED	1 ENGINE, DLSC	1
F5073D3	WATERCRAFT DISTRESS- UNKNOWN SITUATION	1 ENGINE, DLSC	1
F5073B1	WATERCRAFT DISTRESS- OUT OF FUEL	1 ENGINE, DLSC	1
F5073B2	WATERCRAFT DISTRESS- ENGINE WILL NOT START	1 ENGINE, DLSC	1
F5073B3	WATERCRAFT DISTRESS- RUN AGROUND	1 ENGINE, DLSC	1
F5073B4	WATERCRAFT DISTRESS- FLARE OTHER THAN ORANGE OR RED	1 ENGINE, DLSC	1

RESPONSE CODE	INCIDENT DESCRIPTION	FIRST ALARM ASSIGNMENT (ERF)	# OF APPAR
F5073D1I	WATERCRAFT DISTRESS- TAKING ON WATER	1 ENGINE, DLSC	1
F5073D2I	WATERCRAFT DISTRESS- FLAR SIGNTING ORANGE OR RED	1 ENGINE, DLSC	1
F5073D3I	WATERCRAFT DISTRESS- UNKNOWN SITUATION	1 ENGINE, DLSC	1
F5073B1I	WATERCRAFT DISTRESS- OUT OF FUEL	1 ENGINE, DLSC	1
F5073B2I	WATERCRAFT DISTRESS- ENGINE WILL NOT START	1 ENGINE, DLSC	1
F5073B3I	WATERCRAFT DISTRESS- RUN AGROUND	1 ENGINE, DLSC	1
F5073B4I	WATERCRAFT DISTRESS- FLARE OTHER THAN ORANGE OR RED	1 ENGINE, DLSC	1
F5074D1	SUSPICIOUS PACKAGE- LEAKING RESIDUE WITH SICK PEOPLE	PD, COD,HMC,EMS	0
F5074D2	SUSPICIOUS PACKAGE- WITH SICK AND INJURED	PD, COD,HMC,EMS	0
F5074D3	SUSPICIOUS PACKAGE- ORDINACE FOUND WITH SICK PEOPLE	PD, COD,HMC,EMS, 1 ENGINE	0
F5074C1	SUSPICIOUS PACKAGE- LEAKING RESIDUE	PD, COD,HMC,1 ENGINE	0
F5074C2	SUSPICIOUS PACKAGE- SUSP PACKAGE GENERAL	PD, COD, HMC	0
F5074C3	SUSPICIOUS PACKAGE- BOMB THREAT (SUSPECT CALLER)	PD, COD	0
F5074B1	SUSPICIOUS PACKAGE-BOMB THREAT	PD, COD	0
F5074A1	SUSPICIOUS PACKAGE- EXPLOSIVE FOUND	PD, COD, 1 ENGINE	0
F5074D1C	SUSPICIOUS PACKAGE- LEAKING RESIDUE WITH SICK PEOPLE	PD, COD,HMC,EMS	0
F5074D2C	SUSPICIOUS PACKAGE- WITH SICK AND INJURED	PD, COD,HMC,EMS	0
F5074D3C	SUSPICIOUS PACKAGE- ORDINACE FOUND WITH SICK PEOPLE	PD, COD,HMC,EMS, 1 ENGINE	0
F5074C1C	SUSPICIOUS PACKAGE- LEAKING RESIDUE	PD, COD,HMC,1 ENGINE	0
F5074C2C	SUSPICIOUS PACKAGE- SUSP PACKAGE GENERAL	PD, COD, HMC	0
F5074C3C	SUSPICIOUS PACKAGE- BOMB THREAT (SUSPECT CALLER)	PD, COD	0
F5074B1C	SUSPICIOUS PACKAGE-BOMB THREAT	PD, COD	0
F5074A1C	SUSPICIOUS PACKAGE- EXPLOSIVE FOUND	PD, COD, 1 ENGINE	0
F5074D1G	SUSPICIOUS PACKAGE- LEAKING RESIDUE WITH SICK PEOPLE	PD, COD,HMC,EMS	0
F5074D2G	SUSPICIOUS PACKAGE- WITH SICK AND INJURED	PD, COD,HMC,EMS	0
F5074D3G	SUSPICIOUS PACKAGE- ORDINACE FOUND WITH SICK PEOPLE	PD, COD,HMC,EMS, 1 ENGINE	0
F5074C1G	SUSPICIOUS PACKAGE- LEAKING RESIDUE	PD, COD,HMC,1 ENGINE	0
F5074C2G	SUSPICIOUS PACKAGE- SUSP PACKAGE GENERAL	PD, COD, HMC	0
F5074C3G	SUSPICIOUS PACKAGE- BOMB THREAT (SUSPECT CALLER)	PD, COD	0

RESPONSE CODE	INCIDENT DESCRIPTION	FIRST ALARM ASSIGNMENT (ERF)	# OF APPAR
F5074B1G	SUSPICIOUS PACKAGE-BOMB THREAT	PD, COD	0
F5074A1G	SUSPICIOUS PACKAGE- EXPLOSIVE FOUND	PD, COD, 1 ENGINE	0
F5074D1H	SUSPICIOUS PACKAGE- LEAKING RESIDUE WITH SICK PEOPLE	PD, COD,HMC,EMS	0
F5074D2H	SUSPICIOUS PACKAGE- WITH SICK AND INJURED	PD, COD,HMC,EMS	0
F5074D3H	SUSPICIOUS PACKAGE- ORDINACE FOUND WITH SICK PEOPLE	PD, COD,HMC,EMS, 1 ENGINE	0
F5074C1H	SUSPICIOUS PACKAGE- LEAKING RESIDUE	PD, COD,HMC,1 ENGINE	0
F5074C2H	SUSPICIOUS PACKAGE- SUSP PACKAGE GENERAL	PD, COD, HMC	0
F5074C3H	SUSPICIOUS PACKAGE- BOMB THREAT (SUSPECT CALLER)	PD, COD	0
F5074B1H	SUSPICIOUS PACKAGE-BOMB THREAT	PD, COD	0
F5074A1H	SUSPICIOUS PACKAGE- EXPLOSIVE FOUND	PD, COD, 1 ENGINE	0
F5074D1N	SUSPICIOUS PACKAGE- LEAKING RESIDUE WITH SICK PEOPLE	PD, COD,HMC,EMS	0
F5074D2N	SUSPICIOUS PACKAGE- WITH SICK AND INJURED	PD, COD,HMC,EMS	0
F5074D3N	SUSPICIOUS PACKAGE- ORDINACE FOUND WITH SICK PEOPLE	PD, COD,HMC,EMS, 1 ENGINE	0
F5074C1N	SUSPICIOUS PACKAGE- LEAKING RESIDUE	PD, COD,HMC,1 ENGINE	0
F5074C2N	SUSPICIOUS PACKAGE- SUSP PACKAGE GENERAL	PD, COD, HMC	0
F5074C3N	SUSPICIOUS PACKAGE- BOMB THREAT (SUSPECT CALLER)	PD, COD	0
F5074B1N	SUSPICIOUS PACKAGE-BOMB THREAT	PD, COD	0
F5074A1N	SUSPICIOUS PACKAGE- EXPLOSIVE FOUND	PD, COD, 1 ENGINE	0
F5074D1O	SUSPICIOUS PACKAGE- LEAKING RESIDUE WITH SICK PEOPLE	PD, COD,HMC,EMS	0
F5074D2O	SUSPICIOUS PACKAGE- WITH SICK AND INJURED	PD, COD,HMC,EMS	0
F5074D3O	SUSPICIOUS PACKAGE- ORDINACE FOUND WITH SICK PEOPLE	PD, COD,HMC,EMS, 1 ENGINE	0
F5074C1O	SUSPICIOUS PACKAGE- LEAKING RESIDUE	PD, COD,HMC,1 ENGINE	0
F5074C2O	SUSPICIOUS PACKAGE- SUSP PACKAGE GENERAL	PD, COD, HMC	0
F5074C3O	SUSPICIOUS PACKAGE- BOMB THREAT (SUSPECT CALLER)	PD, COD	0
F5074B1O	SUSPICIOUS PACKAGE-BOMB THREAT	PD, COD	0
F5074A1O	SUSPICIOUS PACKAGE- EXPLOSIVE FOUND	PD, COD, 1 ENGINE	0
F5074D1R	SUSPICIOUS PACKAGE- LEAKING RESIDUE WITH SICK PEOPLE	PD, COD,HMC,EMS	0
F5074D2R	SUSPICIOUS PACKAGE- WITH SICK AND INJURED	PD, COD,HMC,EMS	0
F5074D3R	SUSPICIOUS PACKAGE- ORDINACE FOUND WITH SICK PEOPLE	PD, COD,HMC,EMS, 1 ENGINE	0

RESPONSE CODE	INCIDENT DESCRIPTION	FIRST ALARM ASSIGNMENT (ERF)	# OF APPAR
F5074C1R	SUSPICIOUS PACKAGE- LEAKING RESIDUE	PD, COD,HMC,1 ENGINE	0
F5074C2R	SUSPICIOUS PACKAGE- SUSP PACKAGE GENERAL	PD, COD, HMC	0
F5074C3R	SUSPICIOUS PACKAGE- BOMB THREAT (SUSPECT CALLER)	PD, COD	0
F5074B1R	SUSPICIOUS PACKAGE-BOMB THREAT	PD, COD	0
F5074A1R	SUSPICIOUS PACKAGE- EXPLOSIVE FOUND	PD, COD, 1 ENGINE	0
F5075D1	TRAIN FIRE-WITH STRUCTURES	2 ENGINE, 1 LADDER, 1 COMMAND, 1 SAFETY, 1 RIC	3
F5075D2	TRAIN FIRE- WITH VEHICLES INVOLVED	2 ENGINE, 1 LADDER, 1 COMMAND, 1 SAFETY	3
F5075D5	TRAIN FIRE- AT GROUND LEVEL	2 ENGINE, 1 LADDER, 1 COMMAND, 1 SAFETY	3
F5075D7 T	RAIN FIRE- ON BRIDGE OR TRESTLE	2 ENGINE, 1 LADDER, 1 COMMAND, 1 SAFETY	3
F5075C1	TRAIN FIRE- UNKNOWN SITUATION	2 ENGINE, 1 LADDER, 1 COMMAND, 1 SAFETY	3
F5075O1	TRAIN FIRE ON MOVING TRAIN	NOTIFY RAILROAD SERVICE	0
F5075D1F	TRAIN FIRE-WITH STRUCTURES	2 ENGINE, 1 LADDER, 1 COMMAND, 1 SAFETY, 1 RIC	3
F5075D2F	TRAIN FIRE- WITH VEHICLES INVOLVED	2 ENGINE, 1 LADDER, 1 COMMAND, 1 SAFETY	3
F5075D5F	TRAIN FIRE- AT GROUND LEVEL	2 ENGINE, 1 LADDER, 1 COMMAND, 1 SAFETY	3
F5075D7F	TRAIN FIRE- ON BRIDGE OR TRESTLE	2 ENGINE, 1 LADDER, 1 COMMAND, 1 SAFETY	3
F5075C1F	TRAIN FIRE- UNKNOWN SITUATION	2 ENGINE, 1 LADDER, 1 COMMAND, 1 SAFETY	3
F5075O1F	TRAIN FIRE ON MOVING TRAIN	NOTIFY RAILROAD SERVICE	0
F5075D1L	TRAIN FIRE-WITH STRUCTURES	2 ENGINE, 1 LADDER, 1 COMMAND, 1 SAFETY, 1 RIC	3
F5075D2L	TRAIN FIRE- WITH VEHICLES INVOLVED	2 ENGINE, 1 LADDER, 1 COMMAND, 1 SAFETY	3
F5075D5L	TRAIN FIRE- AT GROUND LEVEL	2 ENGINE, 1 LADDER, 1 COMMAND, 1 SAFETY	3
F5075D7L	TRAIN FIRE- ON BRIDGE OR TRESTLE	2 ENGINE, 1 LADDER, 1 COMMAND, 1 SAFETY	3
F5075C1L	TRAIN FIRE- UNKNOWN SITUATION	2 ENGINE, 1 LADDER, 1 COMMAND, 1 SAFETY	3
F5075O1L	TRAIN FIRE ON MOVING TRAIN	NOTIFY RAILROAD SERVICE	0
F5075D1P	TRAIN FIRE-WITH STRUCTURES	2 ENGINE, 1 LADDER, 1 COMMAND, 1 SAFETY, 1 RIC	3
F5075D2P	TRAIN FIRE- WITH VEHICLES INVOLVED	2 ENGINE, 1 LADDER, 1 COMMAND, 1 SAFETY	3
F5075D5P	TRAIN FIRE- AT GROUND LEVEL	2 ENGINE, 1 LADDER, 1 COMMAND, 1 SAFETY	3
F5075D7P	TRAIN FIRE- ON BRIDGE OR TRESTLE	2 ENGINE, 1 LADDER, 1 COMMAND, 1 SAFETY	3
F5075C1P	TRAIN FIRE- UNKNOWN SITUATION	2 ENGINE, 1 LADDER, 1 COMMAND, 1 SAFETY	3
F5075O1P	TRAIN FIRE ON MOVING TRAIN	NOTIFY RAILROAD SERVICE	0