

# REQUEST FOR QUOTATION

QB24-25-103

RFQ NUMBER: 0004106  
RFQ DATE: 04/15/25



CITY OF DANVILLE  
427 Patton Street  
P.O. Box 3300  
Danville, VA 24543  
(434) 799-6528  
FAX: (434) 799-5102

THIS IS NOT AN ORDER

E-mail: purchasing@danvilleva.gov Internet: www.danville-va.gov  
TAX ID # 54-600-1243

V  
E  
N  
D  
O  
R

BID

S  
H  
I  
P  
T  
O

DEPARTMENT OF UTILITIES  
UTILITY SERVICE BUILDING  
1040 MONUMENT ST  
DANVILLE, VA 24541

Deliver To: Bustamante, Jeffery

Instructions:

It is understood that our terms and conditions listed on back will apply to any order that may result from this solicitation.

Note any exceptions for our consideration.

F.O.B. Destination: It is the basic policy of the City to receive goods F.O.B. (free on board) Destination, which means that freight charges are paid by the seller who owns and assumes all risk for the goods until they are accepted at the designated delivery point. The cost of shipping the goods may be included in the quoted price or by the seller as a separate line item.

Quote Required By	Send Quote To
04/28/25	LORI FLANIGAN

R047948

ITEM	QUANTITY	UNIT	DESCRIPTION	UNIT PRICE	EXTENSION
*****QB-24-25-103*****			"INDUSTRIAL METER SETS"		
<p>YOU ARE INVITED TO PROVIDE A BID FOR THE FOLLOWING "INDUSTRIAL METER SETS"</p> <p>CITY OF DANVILLE VIRGINIA DEPARTMENT OF UTILITIES ALL BIDS SHALL INCLUDE SHIPPING AND HANDLINGCOST TO DELIVER TO SHIP TO ADDRESS ABOVE ONLY SEALED BIDS WILL BE ACCEPTED.</p> <p>BIDS WILL BE ACCEPTED BY THE DIRECTOR OF PURCHASING CAROL HENLEY BY2:00 PM MONDAY APRIL 28, 2025</p> <p>MAIL SEAL BIDS OR HAND DELIVER TO: CITY OF DANVILLE PURCHASING DEPT 427 PATTON ST ROOM 304</p>					
				TOTAL	

Payment Terms	Freight Terms	Delivery Promised	Telephone	Fax
Quote Valid Until	Vendor Quotation No.	Signature and Title		

# REQUEST FOR QUOTATION

**V  
E  
N  
D  
O  
R**

BID

RFQ NUMBER: Q004106

RFQ DATE: 04/15/25

ITEM	QUANTITY	UNIT	DESCRIPTION	UNIT PRICE	EXTENSION
<p>DANVILLE, VA 24541</p> <p>MARK ON THE OUTSIDE OF THE ENVELOPE:</p> <p>QB-24-25-103</p> <p>ELECTRONIC SUBMISSIONS CAN BE MADE AT</p> <p><a href="http://www.eva.virginia.gov">www.eva.virginia.gov</a></p> <p>IF ADDENDA ARE ISSUED, SUPPLIERS THAT HAVE SUBMITTED AN ELECTRONIC BID WILL NEED TO RESUBMIT TO THE LATEST VERSION OF THE SOLICITATION.</p>					
001	1	LS	JTI Meter Set		
002	1	LS	Bisbee Meter Set		
				TOTAL	

Payment Terms	Freight Terms	Delivery Promised	Telephone	Fax
Quote Valid Until	Vendor Quotation No.	Signature and Title		

# CITY OF DANVILLE, VIRGINIA

## WATER AND GAS DIVISION



### JTI GAS MEASUREMENT & REGULATOR STATION

MARCH 2025

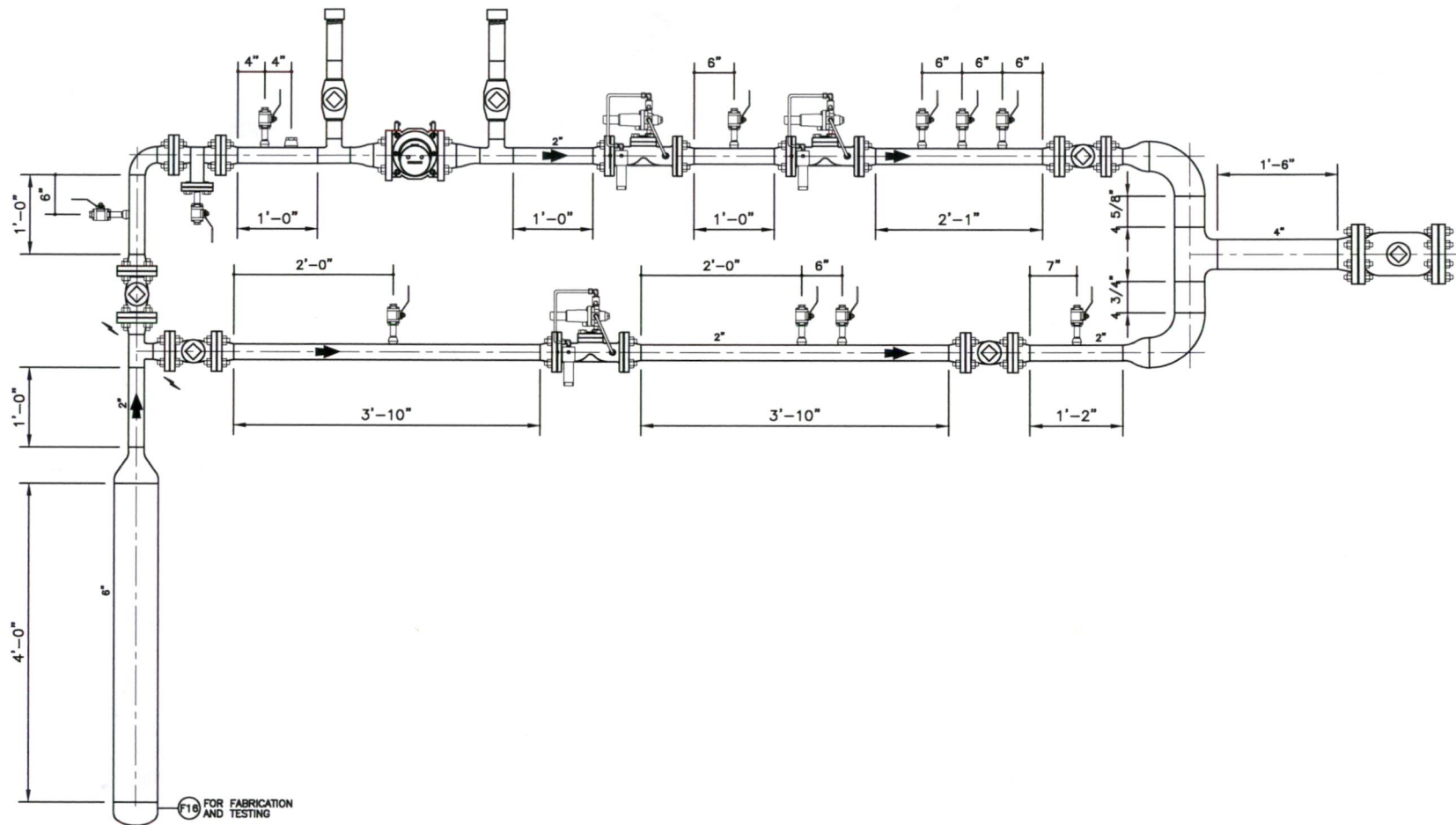
INDEX OF SHEETS	
PROJECT TITLE PAGE	
SHEET 1	BILL OF MATERIALS
SHEET 2	GAS MEASUREMENT & REGULATOR STATION ELEVATION VIEW - PIPING
SHEET 3	GAS MEASUREMENT & REGULATOR STATION ELEVATION VIEW - FABRICATION
SHEET 4	GAS MEASUREMENT & REGULATOR STATION DETAILS AND NOTES
SHEET 5	GAS MEASUREMENT & REGULATOR STATION INSTALLATION DETAILS



JTI METER SET MATERIALS		
ITEM	QTY.	DESCRIPTION
P1	4 LF±	6" PIPE, STEEL, API 5L, STD, X-52, SEAMLESS, COATED
P2	2 LF±	4" PIPE, STEEL, API 5L, STD, X-52, SEAMLESS, BARE
P3	16 LF±	2" PIPE, STEEL, API 5L, STD, X-52, SEAMLESS, BARE
P4	10 LF±	1/2" TUBING, STAINLESS STEEL, ASTM A269, 0.035" WT, UNS S31600, SEAMLESS, BRIGHT ANNEALED
P5	2	2" X 6" PIPE NIPPLE, STEEL, API 5L, STD, GRADE B, SEAMLESS, BARE, ASTM A733, STRAIGHT-MNPT
P6	11	1/2" X 3" NIPPLE, STEEL, API 5L, STD, GRADE B, SEAMLESS, BARE, ASTM A733 (TBE) MNPT-MNPT
E1	3	2" REGULATOR, MOONEY FLOWGRID FG-51 2"x1", CLASS 150, FxF, 100% CAGE, 20S PILOT, W/ RED SPRING, TYPE 305 FILTER
E2	1	3" METER, DRESSER B3-5M175, ANSI 150
E3	1	2" T-STRAINER, KEROTEST TST-215, ANSI 150, FxF
V1	1	4" BALL VALVE, KEROTEST WELDBALL, FULL PORT, LOCKABLE, API 6D, ASME B16.43, CL150, FxF
V2	4	2" BALL VALVE, KEROTEST WELDBALL, FULL PORT, LOCKABLE, API 6D, ASME B16.43, CL150, FxF
V3	2	2" BALL VALVE, KEROTEST WELDBALL, FULL PORT, LOCKABLE, API 6D, ASME B16.43, CL150, WxW
V4	11	1/2" BALL VALVE, STAINLESS STEEL, HANDLE OPERATED, LOCKABLE, 3000#, FNPT-FNPT
F1	1	6" ELL, 90D, STEEL, ASME B16.9 STD, Y-52, BARE
F2	2	4" ELL, 90D, STEEL, ASME B16.9 STD, Y-52, BARE
F3	1	2" ELL, 90D, STEEL, ASME B16.9 STD, Y-52, BARE
F4	1	6"x2" REDUCER, CONCENTRIC, STEEL, ASME B16.9 STD, Y-52, BARE
F5	2	4"x2" REDUCER, CONCENTRIC, STEEL, ASME B16.9 STD, Y-52, BARE
F6	2	3"x2" REDUCER, CONCENTRIC, STEEL, ASME B16.9 STD, Y-52, BARE
F7	1	4" TEE, STEEL, ASME B16.9 STD, Y-52, BARE
F8	3	2" TEE, STEEL, ASME B16.9 STD, Y-52, BARE
F9	1	4" FLANGE, STEEL, WNR/F, STD, F-52, ANSI B16.5 CL150
F10	1	4" FLANGE, STEEL, BLIND/R/F, STD, F-52, ANSI B16.5 CL150
F11	2	3" FLANGE, STEEL, WNR/F, STD, F-52, ANSI B16.5 CL150
F12	16	2" FLANGE, STEEL, WNR/F, STD, F-52, ANSI B16.5 CL150
F13	1	1" THREDOLET, STEEL, ASTM A105, ASME B16.11 CL3000, ASME B31.8, 2 1/2"-2" RUN
F14	11	1/2" THREDOLET, STEEL, ASTM A105, ASME B16.11 CL3000, ASME B31.8, 2 1/2"-2" RUN
F15	2	2" CAP, STEEL, ASTM A105, ASME B16.11 CL3000, ASME B1.20.1, NPT
F16	1	6" CAP, STEEL, ASME B16.9 STD, Y-52, BARE
M1	2	4" GASKET, 1/16" THICK, NON-METALLIC, NON-ASBESTOS, RING TYPE, ASME B16.21, ANSI B16.5 CL150
M2	2	3" GASKET, 1/16" THICK, NON-METALLIC, NON-ASBESTOS, RING TYPE, ASME B16.21, ANSI B16.5 CL150
M3	14	2" GASKET, 1/16" THICK, NON-METALLIC, NON-ASBESTOS, RING TYPE, ASME B16.21, ANSI B16.5 CL150
M4	1	1" PLUG, STAINLESS STEEL, HEX HEAD, UNS S31600, ASME B16.11, CL3000, MNPT
M5	8	1/2" PLUG, STAINLESS STEEL, HEX HEAD, UNS S31600, ASME B16.11, CL3000, MNPT
M6	16	5/8" X 3-1/2" STUD BOLT ASME B18.2.1, ASME B1.2 CL 2A (UNC) THREADS, ASTM A193 GRADE 5 (4" ANSI 150)
M7	64	5/8" X 3 1/4" STUD BOLT ASME B18.2.1, ASME B1.2 CL 2A (UNC) THREADS, ASTM A193 GRADE 5 (2" ANSI 150)
M8	8	5/8" X 2-3/4" MACHINE BOLT ASME B18.2.1, ASME B1.2 CL 2A (UNC) THREADS, ASTM A193 GRADE 5 (3" ANSI 150 - METER)
M9	144	5/8" NUT, ASME B18.2.2. HEAVY HEX, ASME B1.1 CL 2B (UNC) THREADS, ASTM A194 GRADE 5 (4", 3", & 2" ANSI 150)
M10	3	1/2"x1/2" COMPRESSION TUBE CONNECTOR, STAINLESS STEEL, UNS S31600, MNPT-TUBE SIZE
M11	1	4" PIPE STAND, E-Z LINE FIGURE D W/I-ROD SPACERS, ADJ. HEIGHT
M12	2	2" PIPE STAND, E-Z LINE FIGURE D W/I-ROD SPACERS, ADJ. HEIGHT
M13	4	CONCRETE SUPPORT, 18"x18"x12", #4 REBAR
M14	1	4" FLANGE INSULATING KIT, 1/8" THICK, ASME B16.21, ANSI B16.5 CL150
M15	2	2" FLANGE INSULATING KIT, 1/8" THICK, ASME B16.21, ANSI B16.5 CL150
M16	1	1/2" GAUGE, 2 1/2" DIAL, 0-100PSIG, GLYCERIN FILLED, ASME B40.1 GRADE 2A, STAINLESS STEEL, UNS S31600, MNPT
M17	3 SQ FT±	ROCKSHIELD

GENERAL NOTES		REVISIONS		DRAWN BY: CSY	ORIGINAL DATE: 3/20/2025	WORK ORDER #:	SCALE: NTS			JTI GAS MEASUREMENT & PRESSURE REGULATION  BILL OF MATERIALS	SHEET NUMBER 1 OF 5  DWG NUMBER
#	BY	DESCRIPTION	DATE								
1	CSY	ORIGINAL	3/20/2025	CHECKED BY: BEH							
				APPROVED BY: CJV							





# ELEVATION VIEW - FABRICATION

58 PSIG MAOP, 5 PSIG DELIVERY PRESSURE

3/4" = 1'0"

## GENERAL NOTES

#	BY	REVISIONS	DATE
1.	CSY	ORIGINAL	10/20/2025
2.			
3.			
4.			
5.			
6.			
7.			

DRAWN BY:	CSY
CHECKED BY:	BEH
APPROVED BY:	CJV



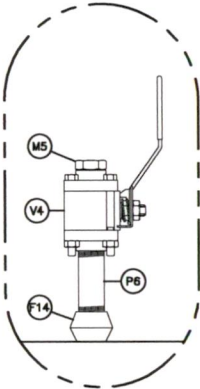
ORIGINAL DATE:	3/20/2025
WORK ORDER #:	
SCALE:	AS NOTED



JTI
GAS MEASUREMENT & PRESSURE REGULATION
FABRICATION DRAWING

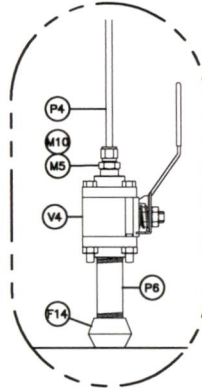
SHEET NUMBER	3 OF 5
DWG NUMBER	





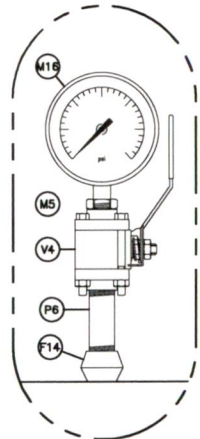
PRG (PURGE)

1 1/2" THREDOLET/VALVE  
SCALE: 3" = 1'-0"



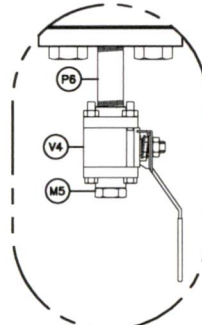
SNS (SENSE)

2 1/2" THREDOLET/ADAPTER  
SCALE: 3" = 1'-0"

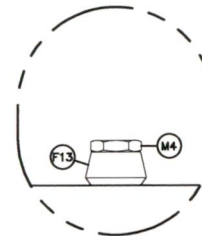


PRS (PRESSURE)

3 1/2" THREDOLET/VALVE/GAUGE  
SCALE: 3" = 1'-0"



4 3/4" STRAINER VALVE  
SCALE: 3" = 1'-0"



THR (THERMOWELL)

5 1" THREDOLET/PLUG  
SCALE: 3" = 1'-0"

### GENERAL NOTES:

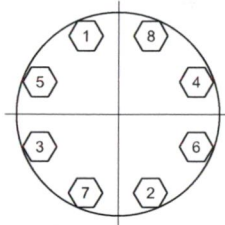
- BOLTS, GASKETS, AND INSULATIONS KITS NOT DEPICTED IN DRAWING
- MAINTAIN 24" MINIMUM CLEARANCE AROUND METER SET
- CITY PIPING ENDS AND CUSTOMER PIPING BEGINS AT INSULATED OUTLET FLANGE (DEMARKATION)
- CUSTOMER IS TO RECEIVE 10 PSIG BASE DELIVERY PRESSURE
- SUFFICIENT PROTECTIVE DEVICES MUST BE CONSTRUCTED TO PROTECT METER SET
- INSTALL SUFFICIENT INSULATED PIPE HANGERS & SUPPORTS TO SECURELY SUPPORT METER SET
- METER TO BE PRESSURE TESTED PER DANVILLE UTILITIES O&M PLAN SPECIFICATIONS
- PERFORM LEAK TEST AFTER CONSTRUCTION, PRIOR TO TURN-ON
- BYPASS VALVES TO BE LOCKED IN CLOSED POSITIONS BEFORE METER SET IS PUT IN SERVICE

### FABRICATION NOTES:

- ALL FITTING TO FITTING WELDS INCLUDE 1/16TH ROOT GAP
- GASKETS TO BE 1/16" THICK & ANSI 150, USED ONCE AND NOT REUSED, AND INSTALLED SINGLY WITHIN FLANGE CONNECTIONS
- DRILL HOLES FOR BRANCH CONNECTION FITTINGS TO BE DRILLED FULL-BORE
- ALL FLANGE BOLT HOLES TO STRADDLE CENTERLINES
- ALL FLANGE BOLTS TO BE TIGHTENED PER SPECIFIED SEQUENCE
- APPLY A THICK, EVEN COAT OF THREAD SEALANT TO ALL MALE THREADED CONNECTIONS
- METER SET TO BE PAINTED PER DANVILLE UTILITIES O&M PLAN SPECIFICATIONS
- LEVEL METER TO WITHIN 1/16" PER FT IN ALL DIRECTIONS AND TIGHTEN FLANGE BOLTS EVENLY (MAX 55 FT-LBS LUBRICATED)
- INSTALL INSULATION KIT AND SPECIFIED LONG BOLTS AT OUTLET FLANGE AT TIME OF CUSTOMER FUEL PIPING CONNECTION

GENERAL NOTES		REVISIONS		DATE	DRAWN BY: CSY	ORIGINAL DATE: 3/20/2025	JTI		SHEET NUMBER
1. SEE SHEET "BOM"	#	BY	DESCRIPTION	DATE	CHECKED BY: BEH	WORK ORDER #:	GAS MEASUREMENT & PRESSURE REGULATION		4 OF 5
2.	0	CSY	ORIGINAL	3/20/2025	APPROVED BY: CJV	SCALE: AS NOTED	DETAILS AND NOTES		DWG NUMBER
3.									
4.									
5.									
6.									
7.									

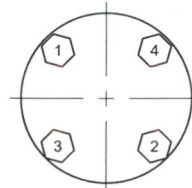




8 BOLT PATTERN

**FLANGE BOLT TIGHTENING SEQUENCE**

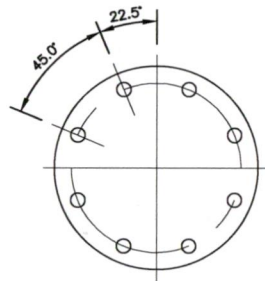
6" FLANGE: TORQUE PER MANUFACTURER'S RECOMMENDATION



4 BOLT PATTERN

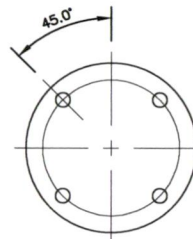
**FLANGE BOLT TIGHTENING SEQUENCE**

3" FLANGE: TORQUE PER MANUFACTURER'S RECOMMENDATION




8 BOLT PATTERN

**FLANGE BOLT ALIGNMENT**



4 BOLT PATTERN

**FLANGE BOLT ALIGNMENT**

GENERAL NOTES		REVISIONS		DRAWN BY: CSY	ORIGINAL DATE: 3/20/2025	 <small>           PUMMEL, KLEPPER &amp; KRAE, LLP            2108 E. CAMP STREET, SUITE 300            RICHMOND, VIRGINIA 23223            T-804.782.1863 F-804.782.2142            ENGINEERS   CONSTRUCTION MANAGERS   PLANNERS   SCIENTISTS         </small>	JTI GAS MEASUREMENT & PRESSURE REGULATION	SHEET NUMBER 5 OF 5
1. SEE SHEET "BOM"	#	BY	DESCRIPTION	DATE	CHECKED BY: BEH		INSTALLATION DETAILS	DWG NUMBER
2.	0	CSY	ORIGINAL	3/20/2025	APPROVED BY: CJV			
3.								
4.								
5.								
6.								
7.								



**City of Danville**  
Department of Utilities

3100 Monument Drive, Danville, Virginia 22026

WORK ORDER #:

SCALE: AS NOTED



**BISBEE AUTO COLLISION GAS METER SET BOM**

ITEM	QTY.	SIZE & DESCRIPTION
1	14 LF	2" PIPE, STEEL, API 5L, STD, GRADE B, SEAMLESS, BARE, PAINTED WITH APPROPRIATE PAINT
2	7	1/2" BALL VALVE, STAINLESS STEEL, HANDLE OPERATED, LOCKABLE, 3000#, FNPT-FNPT
3	1	2" BALL VALVE, BALON, FULL PORT, LOCKABLE, API 6D, ASME B16.43, CL150, WELD-FLANGE
4	4	2" BALL VALVE, BALON, FULL PORT, LOCKABLE, API 6D, ASME B16.43, CL150, FLANGE-FLANGE
5	8	5/8"-11 X 2" BOLT, ASME B18.2.1, SAE J429 GRADE 5, FOR METER MOUNT
6	72	5/8" X 3-3/4" BOLT (STUD) ASME B18.2.1, ASME B1.2 CL 2A (UNC) THREADS, ASTM A193 GRADE B7
7	160	5/8" NUT, ASME B18.2.2. HEAVY HEX, ASME B1.1 CL 2B (UNC) THREADS, ASTM A194 GRADE 2H
8	19	2" FLANGE, STEEL, WN/RF, STD, ASTM A105, ANSI B16.5 CL150
9	3	2" X 6" FRP INSULATION SPACER, SADDLE SIZE X SADDLE LENGTH, 120D SADDLE ENCOMPASSMENT
10	19	2" GASKET, 1/16" THICK, NON-METALLIC, NON-ASBESTOS, RING TYPE, ASME B16.21, ANSI B16.5 CL150
11	1	2" INSULATION KIT, PHENOLIC DW, MYLAR SLVS, RING TYPE (NEOPRENE FACED-PHENOLIC) GASKET ASME B16.21, ANSI B16.5 CL150
12	7	1/2" X 3" NIPPLE, STEEL, API 5L, STD, GRADE B, SEAMLESS, BARE, ASTM A733 (TBE) MNPT-MNPT
13	2	2" X 4" NIPPLE, STEEL, API 5L, STD, GRADE B, SEAMLESS, BARE, ASTM A733 (TBE) WELD-MNPT
14	2	2" END CAP, STEEL, ASTM A105, ASME B16.11 CL3000, FNPT
15	3	28"-36" PIPE STAND, STEEL, 2" RADIUS U-SHAPED SADDLE, 2" SUPPORT PIPE SIZE, 12"X12" BASE PLATE, ADJ. HEIGHT
16	7	1/2" PLUG, STAINLESS STEEL, HEX HEAD, UNS S31600, ASME B16.11, CL3000, MNPT
17	2	2" ELL, 90D, STEEL, ASME B16.9 STD, ASTM A234 WPB, BARE
18	4	2" TEE, STEEL, ASME B16.9 STD, ASTM A234 WPB, BARE
19	6	1/2" THREDOLET, STEEL, ASTM A105, ASME B16.11 CL3000, ASME B31.8, FIT TO 2" RUN
20	12	5/8" DIA. X 5" LG ANCHOR BOLTS, HILTI, HVA ADHESIVE SYSTEM, ASTM A193 B7, C.S. HAS RODS
21	2	2" Ball Valve-FNPT-MNPT
22	1	Gas Riser- 2" FLANGE-WELD to 2" STEEL to PLASTIC TRANSITION WELD-RISER TO BE TOTAL LENTH OF 3'

